



**ACWA POWER ELECTRICITY OPERATION AND  
MANAGEMENT INDUSTRY AND TRADE CO.**



# **ACWA POWER KIRIKKALE NATURAL GAS COMBINED CYCLE POWER PLANT PROJECT STAKEHOLDER ENGAGEMENT PLAN**

## **APPENDIXES**

**APPENDIX-1** Site Location Map

**APPENDIX-2** 1/25.000 Scaled Topographic Map and General Layout

**APPENDIX-3** Brochure

**APPENDIX-4** Meeting Photos

**APPENDIX-5** Meeting Notes

**APPENDIX-6** Newspapers

**APPENDIX-7** Invitation Documents



**MGS PROJECT CONSULTANCY ENGINEERING TRADE CO.**

**ANKARA – JUNE/2014**

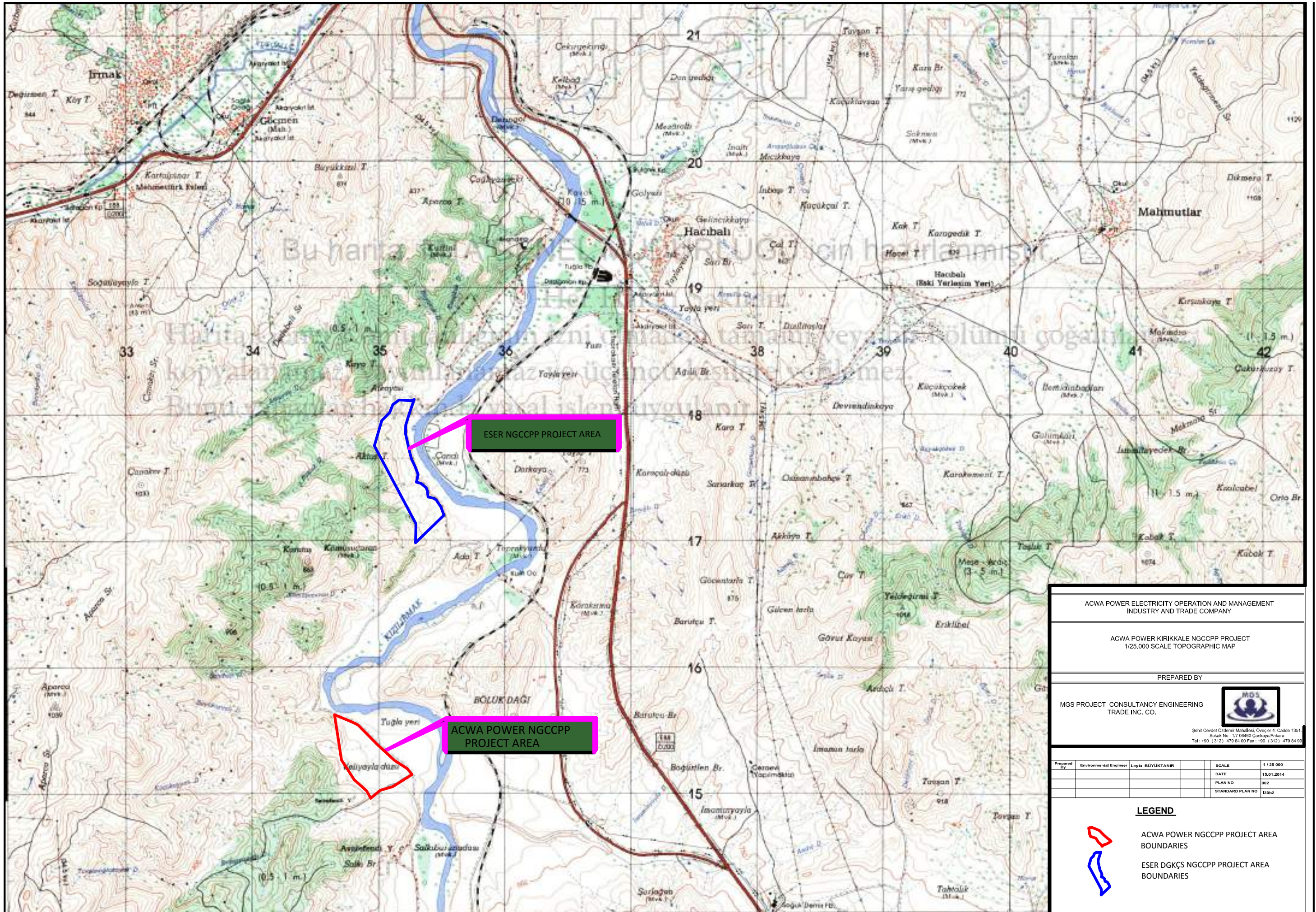
# **APPENDIX-1**

## **SITE LOCATION MAP**



**APPENDIX-2**  
**1/25.000 SCALED TOPOGRAPHIC**  
**MAP AND GENERAL LAYOUT**





ACWA POWER ELECTRICITY OPERATION AND MANAGEMENT  
INDUSTRY AND TRADE COMPANY

ACWA POWER KIRIKKALE NGCCPP PROJECT  
1/25,000 SCALE TOPOGRAPHIC MAP

PREPARED BY

MGS PROJECT CONSULTANCY ENGINEERING  
TRADE INC. CO.



Sehit Cavid Ozdemir Mahallesi, Öveçler 4. Cadde 1351  
Sokak No : 1/7 06460 Çankaya/Ankara  
Tel : +90 (312) 479 84 00 Fax : +90 (312) 479 84 99

Prepared By	Environmental Engineer	Leyla BÜYÜKTANIR	SCALE	1 / 25 000
DATE			15.01.2014	
PLAN NO			002	
STANDARD PLAN NO			13062	

#### LEGEND



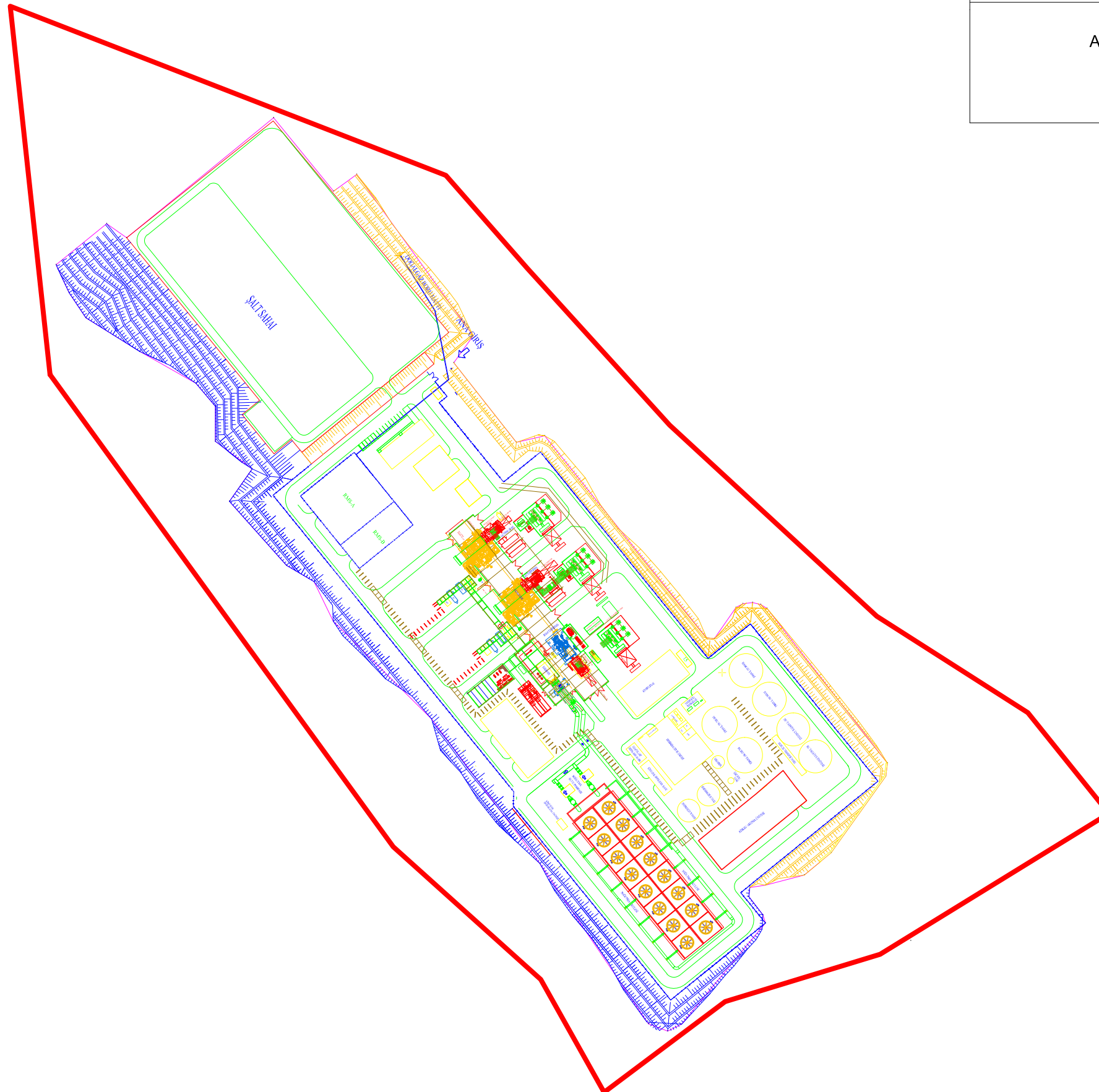
ACWA POWER NGCCPP PROJECT AREA  
BOUNDARIES

ESER DGKÇS NGCCPP PROJECT AREA  
BOUNDARIES



ACWA POWER ELECTRICITY OPERATION AND MANAGEMENT  
INDUSTRY AND TRADE COMPANY

ACWA POWER KIRIKKALE NGCCPP PROJECT  
LAYOUT PLAN



# **APPENDIX-3**

# **BROCHURE**

## NATURAL GAS CYCLE POWER PLANT PROJECT

ACWA Power Electricity Operation and Management Industry and Trade Co. is planning to install Natural Gas Combined Cycle Power Plant (CCPP) to Kırıkkale by Province, Yahşıhan District, with the installed capacity of 834.09 MWe / 849.1 MWm / 1,528.5 MWt.

At the power plant, two Gas Turbine (284.53 MW) and one steam turbine (280.04 MW) will be operated to produce 6,795,000,000 KWh annually.



Natural Gas Power Plants have priority considering low environmental impacts and high energy efficiency. ACWA Power Kırıkkale Natural Gas Combined Cycle Power Plant is one of the important projects that will meet

growing Turkey energy demand so that is public interest Project.

The basic configuration of ACWA Power Plant will be planned to be consist of below main and auxiliary units;

- 2 Dry Low NOx burners Gas Turbine
- 2 horizontal flow-type three level pressured Waste Heat Boiler
- 1 horizontal outlet, three pressure level Steam Turbine,
- 3 water or air cooled generator unit
- 1 wet cooling tower,
- 3 Auxiliary Transformer, 15/380 kV substation main amplifier,
- Isolated Phase Connector, 380 kV switchyard site,
- Water Treatment Plant, Waste Water Treatment Plant, Boiler feedwater pumps,
- Electrical systems, mechanical systems, gas supply and heating system.

The project is planned to be completed in 30 months and economic life time of the project will be 49 years. During construction 500 people and during operation 40 people will be employed. The employers will be selected from local people as possible.

## PROJECT LOCATION



## PUBLIC PARTICIPATION MEETING INFORMATION

Date : 23.05.2013  
Time : 14:00  
Location : Kılıçlar Municipality Coffee House  
Address : Kılıçlar Province-  
Yahşıhan/KIRIKKALE



## ACWA POWER ELECTRICITY OPERATION AND MANAGEMENT INDUSTRY AND TRADE CO.

Teşvikiye Caddesi Teşvikiye Palas No:23 -2  
Nişantaşı 34365 İstanbul, Türkiye  
Tel : +90 212 259 33 96 Faks : +90 212 259 33 97

## ACWA POWER KIRIKKALE NATURAL GAS COMBINED CYCLE POWER PLANT PROJECT

KIRIKKALE İLİ, YAHŞIHAN İLÇESİ, KILIÇLAR  
KASABASI

ENVIRONMENTAL IMPACT ASSESSMENT (EIA)  
REPORTING COMPANY



## MGS PROJECT CON. ENG. CO.

ŞEHİT CEVDET ÖZDEMİR MAHALLESİ, ÖVEÇLER  
4. CADDE, 1351. SOKAK, NO:1/7  
06460, ÇANKAYA/ANKARA  
TEL: 0 312 479 84 00 (pbx),  
FAKS: 0 312 479 84 99  
web:www.mgsmuhendislik.com  
Mail: mgs@mgsmuhendislik.com



### IMPORTANT ENVIRONMENTAL IMPACTS FROM THE PROJECT

Natural Gas Combined Cycle Power Plant (NGCCPP) Project with installed capacity of 834.09 MWe / 849.1 MWm / 1,528.5 MWt by Acwa Power Electricity Operation and Management Inc. Co.

NGCCPP Project is included in Annex-1 "High Polluting activities" Article 1.1.2 "Gas fueled power plants having thermal capacity of 100 MW or over", Regulation on Required Permits and Licenses According to Environmental Law published in 29.04.2009 dated and 27214 number Official Gazette. Therefore, Environment Permit will be proceeding by the start of operation.

Environmental effects of the project will be driven from construction and operational phases.

#### Potential Environmental Effects of The Project:

- ❖ Solid and liquid wastes from workers of construction and operation phases
- ❖ Solid wastes from construction activities (excavation wastes, construction wastes, etc.)
- ❖ Noise from machines used during construction and operation phases
- ❖ Dust from construction activities
- ❖ Exhaust gas from natural gas fuel using during operation phase
- ❖ Waste water from water softening units during operation phase.

In the scope of the EIA Report that will be prepared according to special format given by the Ministry of Environment and Urbanization, the potential environmental impact from the project (amount of waste, air pollution, noise, etc.) will be calculated according to the formulas given in the relevant regulations and legislation, the results will be compared with limit values.

**1) Impacts on Water Resources:** Natural Gas Combined Cycle Power Plant will be needed cooling water and boiler feed water, which will be supplied from caisson wells. Under the project a total of 7-10 caissons will be planned. To view the General Directorate of State Hydraulic Works view will be taken considering planned caisson wells.

### PRECAUTIONS TO REDUCE THE ADVERSE IMPACT ON ENVIRONMENT

Before the operation phase of the plant, ground water usage permit will be obtained from General Directorate of SHW in the scope of Law numbered 167.

Domestic usage water will be supplied from water network or purchasing from the market.

The wastewater originated from construction and operation phase will be treated with wastewater treatment plant. The belowdown wastewater will be neutralized and diverted to discharge tank for equalization before discharge.

In the scope of Project, the liabilities will be obeyed according to Control of Water Pollution Regulation published in 25687 dated and 31.12.2004 Official Gazette (amended with 26786 dated and 13.02.2008 Official Gazette)

**2) Solid Waste:** Solid waste generation during construction and operation of the project in question. Consist of solid wastes; containers sealed to be in the project area according to the nature (organic, plastic, glass, paper, metal, etc.). Storage containers collected separately, appearance, odor, dust, contamination of the environment in terms of such factors should be sealed off and moved to private vehicles.

During the construction phase, recyclable waste such as glass, paper, plastic-type waste will be collected and handled according to Control of Packing Waste Regulation published in 26562 number and dated 24.06.2007 Official Gazette. Non-recyclable solid waste will be collected in suitable containers and given to Municipality.

During the construction and operation phases solid waste will be handled according to Control of Solid Waste Regulation published in 20814 numbered and 14.03.1991 date Official Gazette.

**3) Excavation of waste:** Excavation waste originated from excavation during construction phase, will be temporarily stored separately onsite and will not be dumped uncontrolled. Then for the leveling of the land within the project excavation waste materials will be used as fill material. Excavation waste which will be not used for filling will be disposed according to Control of Excavation, Construction and Demolition Waste Regulation published in 25406 numbered and 18.03.2004 dated Official Gazette.

### PRECAUTIONS TO REDUCE THE ADVERSE IMPACTS ON ENVIRONMENT

**4) Hazardous waste:** During operation phase, hazardous waste will be possibly generated such as maintenance workshop facilities to be contaminated with oil cloth and oakum waste, fluorescent lamps, chemicals used in water softening unit.

Hazardous waste that will occur during the operational phase of the project in the field of temporary hazardous storage area allocated for the collection of hazardous waste collected. During the operational phase will consist of temporary hazardous waste storage area to collect and transport to permitted and licensed disposal facilities by licensed vehicles.

In the scope of Project, the liabilities will be obeyed according to Control of Hazardous Waste Regulation published in 25755 dated and 14.03.2005 Official Gazette (amended with 27537 dated and 30.03.2010 Official Gazette)

**5-Air Quality Impacts:** The project for the work done during the construction phase, there is a little dust formation. This dust by watering at regular intervals to be minimized. During the construction phase there is also the formation of exhaust emissions from vehicles run. The service maintenance tools to keep them under control emissions and exhaust emission inspections be done.

As a result of natural gas combustion in the plant, NOx and CO emissions will occur as a major. The PM and SOx emission levels are ignorable. Gases released into the atmosphere from the power plant so that the plant will operate under the regulatory limit values. To do this, flue gas analyzers shall be worked continuously. In addition, in order to minimize emissions resulting from plant origin, in line with evolving technologies, modification of the current system will be provided if needed.

**6-Noise:** The project's construction and operational phases of the machinery, equipment at the level of noise from the necessary measures will be taken to minimize the environmental impact. Part of the project which was published in the Official Gazette No. 27601 dated 04.06.2010 Environmental Noise Assessment and Management shall comply with the provisions of the Regulation. Employees required personal protective measures shall be taken to prevent noise.

## ENERGY TRANSMISSION LINE DISTANCES

Conductors Over Locations	Minimum Vertical Distance (m)
	Maximum Allowable Voltage For Continuous Line Operating (380 kV)
Waters with to traffic	8.5
Vehicle convenient meadow, field, pasture, etc.	9.5
Vehicle convenient villages and local roads	12
Intercity highways	12
Trees	5
Anyone capable of flat-roofed houses	8.7
Anyone non-capable of angular-roofed houses	8.7
Energy lines	4.5
Oil and gas pipelines	9
Waters and channels with traffic	9
Communication lines	4.5
Railways with no electricity	10.5
Highways	14
* Insulated aerial cable is used, this will be reduced to 0.5 m height values.	

**Turkish Electricity Transmission Company  
Environment and Expropriation Department**  
Nasuh Akar Mah. Türkocağı Cad.  
No: 2 06520 Çankaya-ANKARA  
**Tel:** (312) 203 86 11 **Fax:** (312) 203 87 17

**TEİAŞ 8. Transmission Operation Management  
Department**  
Macun Mahallesi, Fatih Sultan Mehmet Bulvarı  
No:254, ANKARA  
**Tel:** 0 312 397 24 00 **Fax:** 0 312 397 24 14

**EIA Report Company:**  
ELTEM-TEK Elektrik Tesisleri Müh. Müt. Dan. ve Tic.  
A.Ş.  
Ziyabey Cad. 1419. Sok.  
No:14 06520, Balgat-ANKARA  
**Tel:** 0 312 285 13 83 **Fax:** 0 312 287 08 25

## EİH ve İNCELEME ALANI





## DESCRIPTION OF THE PROJECT

**Project:** The overhead transmission line project from Eser Natural Gas Combined Cycle Power Plant located at Kırıkkale province, Yahşihan district to Baglum Substation located at Ankara province Keçiören district with 380 kV and 3B 1272 MCM transmission line.

**Line Length:** OHTL total line length of about will be 114 km.

**Some Quantity:** 27 pcs some point the project is determined.

**Economic Life:** Economic life of OHTL is planned as 30 years.

**Construction period:** the construction phase of the project is scheduled for completion within 24 months.

**Project Objectives:** The subject Kırıkkale with Energy Transmission Line and the Ankara region, mainly uninterrupted, high-quality and reliable electricity will contribute to meet the needs

## REVIEW AND IMPACT AREA

**Review:** OHTL's left and right for a total of 2.5 km x 5 km wide corridor study area,

**Impact:** OHTL's 25 m left and right for a total of 50 m wide corridor has been selected as the domain of the project.

## SOCIAL IMPACTS

**Employment:** The project is to be executed according to the stage staff, unskilled workers will be provided in close vicinity.

**Expropriation:** OHTL path corresponding to the expropriation of immovable property with the easement to do (pass) the establishment of the right to work is to be done by the provisions of Law No. 2942 valuation created by TEİAŞ commission with the ingenuity of the expropriation / easement (transition) costs will be identified and agreed with the rights holders in the event that price is to be paid to the rightful owners.

Direct location, outside the wire of the remaining land under the Electrical Power Plants horizontal and vertical distances as defined in Regulation must be protected by the rights holders will be able to continue to be used.

## ENVIRONMENTAL IMPACTS

**Land Usage:** Sowing and harvesting on private land under cultivation in the construction work will be avoided as much as possible. During the construction phase of the damage will be covered. Topsoil will be stripped prior to excavation and filling work then area will be properly re-laid. Following the work of construction land will be restored.

**Noise:** Construction work will be carried out during daylight hours (7:00 a.m. to 7:00 p.m.). Regular maintenance of construction machinery will be made to not exceed the limits specified in the relevant regulations noise level. At the same time as few as possible and to ensure that the vehicle will run.

**Air Pollution:** According to seasonal conditions during construction activities (particularly in summer) in road transport and irrigation works will be performed in the field. During the process of loading and unloading without tossing excavation to be made shall be considered.

## ENVIRONMENTAL IMPACTS

**Wildlife:** Birds of asparagus to prevent damage to electrical wires and warning spheres will be used. All types of waste during the construction phase (excavation, solid and liquid waste, waste oils, oily wastes etc.) will not be discarded into nature, groundwater and surface water resources.

**Waste:** All waste likely to occur during the construction period will be collected under the legislation, transported and will be disposed of. All types of waste that will occur during the construction phase (excavation, solid and liquid waste, waste oils, oily üstübü etc.) certainly will not be left to nature.

**Effect of Electromagnetic Fields:** Besides, the negative effects of electromagnetic fields on human health is not yet proven, the magnetic field emitted by electrical appliances that we use daily is higher than magnetic field of power transmission lines. Also, the line is passing as far as possible from residential areas and is usually passed from agricultural and forest land so that magnetic fields of transmission line will not affect local people negatively.

Type	Electricity Area (kV/m)	Electromagnetic Area (mG)
380 kV OHTL	0.222-5,0	2,7-86
European Commission Decision	5	1000

## **APPENDIX-4 MEETING PHOTOS**



PUBLIC PARTICIPATION MEETING FOR ACWA POWER NGCCPP









## PUBLIC PARTICIPATION MEETING FOR OVERHEAD TRANSMISSION LINE

### ANKARA MEETING



## KIRIKKALE MEETING





# **APPENDIX-5 MEETING NOTES**

## **ACWA Power Kırıkkale Natural Gas Power Plant Project Public Participation Meeting**

On 23.05.2013 at 14:00 in Kılıçlar Municipality Coffee House, Public Participation Meeting was held pursuant to the EIA Process. Approximately 25 local people attended the meeting.

The meeting was chaired by the Provincial Director of Environment and Urban Planning. In the meeting, it was ensured that the public was informed about the project and their opinions, questions, and recommendations were noted.

Turgut Unal who is the representative of Kırıkkale Provincial Director of Environment and Urban Planning was the chair of the meeting. In the opening speech, Mr. Unal described the investor and consultant firms then he gave the floor to the consultant firm for the presentation.

As being a common practice of the Ministry of Environment and Urban Planning, Participant List was created in which attenders' name-surname, Institution and title, contact information are recorded during the meeting. Therefore participants are recorded with this list. This process will enable further information and activities to be communicated with interested parties in the future, thereby, providing a meaningful consultation process.

In the future, the public can submit their questions, comments and proposals via telephone, e-mail, fax etc. to the AWCA Power and MGS Project; contact information were presented on the cover page of the distributed leaflets. These will be recorded, and evaluated as part of the ESIA process.

Government representatives were Kırıkkale Province Health Directorate, Ministry of Environment and Urbanization and Kırıkkale Province of Environment and Urbanization and the officials.

In the meeting, MGS Project explained the project location, scope of activities, social and environmental impacts and mitigation measures in details. In the meeting, after a brief introduction, attended public and authorities were informed about the Turkey need to this project. Legislation framework to which power plant will be in compliance was explained. Process was detailed in order to examine the possible environmental effects during construction and operation phases of the project. Each type of wastes that will be originated during construction and operation phases and their disposal methods were detailed. Leaflets in which this information included were distributed during meeting for informational purposes.

After the presentation participants' questions, comments and suggestions were taken. During the meeting contact information was shared with participants for opinions and proposals to be submitted after the meeting.

During the meeting, Mr. Unal took public's questions and views. Questions are answered by MGS Project and ACWA Power. Stakeholder's questions are given in following;

Stakeholder : Could you tell us about the status of the project land ownership  
MGS Project-ACWA Power: There is no private ownership of land and all of the grounds of the project is in the state treasury lands.

Stakeholder : Will the local people employed in the project?  
MGS Project-ACWA Power: During construction period 300 -750 workers are required and during operation period 60 workers will be employed approximately. Most of the workers will be provided from this town as much as possible as long as they possess the required skills.

Stakeholder : Does this project affect our agricultural areas? Will there be air pollution caused by the power plant?  
MGS Project-ACWA Power: No because, NOx emissions will be decreased by using DLN - Dry Low NOx system. Emissions originating from power plants will be monitored continuously and National and International Legislations will be followed.

Stakeholder : How do you provide water to the power plant?  
MGS Project-ACWA Power: Water is planned to be taken from Kızılırmak River caisson wells. Cooling system is designed as closed loop system to reduce water requirement.



# **APPENDIX-6 NEWSPAPERS**



Aydınlar arasında Yaşar Kemal, Murathan Mungan, Orhan Pamuk da var.

## 'SADECE ÇEKİLME YETERSİZ'

GENCAY Gürsoy, aydınların barış ve demokrasi seferiyle ilgili şöyle dedi: Süreci salt PKK'nin çekilmesinden ibaret görmek ve göstermek isteyenlere karşı işin demokrasi yanını vurgulayacağız.

## İLK KONFERANS ANKARA'DA

BARIŞ ve Demokrasi konferanslarının ilki 25 mayısta Ankara'da yapılacak. Daha sonra İstanbul ve Anadolu'da tekrarlanacak. »13

DİCLE BAŞTÜRK



# Taraf

DÜŞÜNMEK TARAF OLMAKTIR

11 MAYIS 2013 CUMARTESİ 50KRŞ / KİTİC'DE SATIŞ FİYATI 1 TL



# AKP'de

**T.C.**

**ÇEVRE VE ŞEHİRCİLİK BAKANLIĞI'NDAN**

**DUYURU**

ACWA Güç Elektrik İşletme ve Yönetim Sanayi ve Tic. Ltd.Şti. tarafından Kırıkkale İli, Yahşihan İlçesi, Kılıçlar Beldesi sınırları içerisinde "ACWA Power Kırıkkale Doğalgaz Kombine Çevrim Santrali Projesi" yapılması planlanmaktadır. Söz konusu proje için, Çevresel Etki Değerlendirmesi (ÇED) Yönetmeliğinin 9. maddesi gereğince aşağıda belirtilen tarih ve saatte faaliyetle ilgili Halkı bilgilendirmek, görüş ve önerilerini almak için "Halkın Katılımı Toplantısı" yapılacaktır.

Halkımıza saygı ile duyurulur.

**Toplantı Yeri** : Kılıçlar Belediyesi Belediye Lokali (Kahvehanesi)  
**Toplantı Yerinin Adresi** : Kılıçlar Kasabası-Yahşihan / KIRIKKALE  
**Toplantı Tarihi** : 23.05.2013  
**Toplantı Saati** : 14:00

**Proje Sahibi**

ACWA Güç Elektrik İşletme ve Yönetim Sanayi ve Tic. Ltd.Şti.

**Tel** : (0 212) 259 33 96  
**Faks** : (0 212) 259 33 97

**ÇED Raporunu Hazırlayan Kuruluş**

MGS Proje Müşavirlik Mühendislik Ticaret Ltd. Şti.

**Tel** : (0 312) 479 84 00 (pbx)  
**Faks** : (0 312) 479 84 99  
**Web** : [www.mgsmuhendislik.com](http://www.mgsmuhendislik.com)  
**e-posta** : [mgs@mgsmuhendislik.com](mailto:mgs@mgsmuhendislik.com)



# Yılmaz Yaralandı

Gazeteci meslektaşımız, İhlas Haber Ajansı Muhabiri Veli Yılmaz önceki gün gece kaza geçirdi. Yılmaz'ın kullandığı otomobil yolun sağ şeridine bırakıldığı ileri sürülen otomobille çarpıştı. Kaza-

da Veli Yılmaz yaralandı. Yüzü ve bacağından yaralanan Yılmaz kaldırıldığı Tıp Fakültesi Hastanesinde tedavi altına alındı. Yılmaz'ın durumunun iyi olduğu öğrenildi.



# PUSULA

KIRIKKALE'NİN YEREL MEDYASI

[www.pusulagazetesi.net](http://www.pusulagazetesi.net)



11 Mayıs 2013 Cumartesi

Günlük Siyasi Gazete

Yıl: 8

SAYI: 2499

FİYATI: 70 KR



Kızılırmak



Köksal

# Köksal Demokrat

**T.C.**

**ÇEVRE VE ŞEHİRCİLİK BAKANLIĞI'NDAN**

**DUYURU**

ACWA Güç Elektrik İşletme ve Yönetim Sanayi ve Tic. Ltd.Şti. tarafından Kırıkkale İli, Yahşihan İlçesi, Kılıçlar Beldesi sınırları içerisinde "ACWA Power Kırıkkale Doğalgaz Kombine Çevrim Santrali Projesi" yapılması planlanmaktadır. Söz konusu proje için, Çevresel Etki Değerlendirmesi (ÇED) Yönetmeliğinin 9. maddesi gereğince aşağıda belirtilen tarih ve saatte faaliyetle ilgili Halkı bilgilendirmek, görüş ve önerilerini almak için "Halkın Katılımı Toplantısı" yapılacaktır.

Halkımıza saygı ile duyurulur.

**Toplantı Yeri** : Kılıçlar Belediyesi Belediye Lokali (Kahvehanesi)  
**Toplantı Yerinin Adresi** : Kılıçlar Kasabası-Yahşihan / KIRIKKALE  
**Toplantı Tarihi** : 23.05.2013  
**Toplantı Saati** : 14:00

**Proje Sahibi**

ACWA Güç Elektrik İşletme ve Yönetim Sanayi ve Tic. Ltd.Şti.

**Tel** : (0 212) 259 33 96  
**Faks** : (0 212) 259 33 97

**ÇED Raporunu Hazırlayan Kuruluş**

MGS Proje Müşavirlik Mühendislik Ticaret Ltd. Şti.

**Tel** : (0 312) 479 84 00 (pbx)  
**Faks** : (0 312) 479 84 99  
**Web** : [www.mgsmuhendislik.com](http://www.mgsmuhendislik.com)  
**e-posta** : [mgs@mgs mühendislik.com](mailto:mgs@mgs mühendislik.com)



... ..

# ANIKARA



**İl Gazetesi**  
Türkiye'nin Yerel Gazetesi  
30 TEMMUZ 2013 SAĞI [www.ilgazetesi.com.tr](http://www.ilgazetesi.com.tr) 25 Kuruş

**da bin kişi**

**KARŞI**

*Journal of Management Education* 36(7) 809-824

**TT'den Digitürk'e 530 milyon \$**

Türk Telekomünikasyon A.Ş. Digitürk'ten yüzde 53 oranındaki hissesini satın almak için vermiş olduğu teklifi onaylayan Yönetim Kurulu, 530 milyon dolar değerindeki bu işleme onay vermiştir. Türk Telekomünikasyon A.Ş. Yönetim Kurulu, 530 milyon dolar değerindeki bu işleme onay vermiştir. Türk Telekomünikasyon A.Ş. Yönetim Kurulu, 530 milyon dolar değerindeki bu işleme onay vermiştir.

Fiyatı: 25 KURUS

Yıllara 105,4 bin geyne yökeldi. Bu yökildi, geynek 12 yökildönemde geyne ekonomik durumun daha ila olacağı yöküde beklenildi plan kalkışkılarının sayının geyne yökildönemde artacağı bildirildi. Hemen geynek 12 yökildönemde yökildönem maddi durumun beklenildi maddi de geyne yökildönem 2. maddi de geyne. Hemen yökildönem 92,4 maddi maddi de geyne 94,3 yökildönem. Bu arda, geynek 12 yökildönemde hemen maddi durumun daha ila olacağı beklenildi. Hemen yökildönemde yökildönemde yökildönem (Ankara, az)

Şimşek'ten  
memura  
bayram  
müdesi

**M**aliye Bakanı Mehmet Şimşek'in talimatıyla kamu çalışanlarının maaşları Ramazan Bayramı öncesi ödenecek. Bakan Şimşek imzalı





**T.C.**  
**ÇEVRE VE ŞEHİRCİLİK BAKANLIĞI**  
**DUYURU**

Kırıkkale ili, Yahşıhan ve Merkez İlçesi; Ankara ili, Kalecik, Çubuk, Pursaklar, Keçiören ve Yenimahalle ilçeleri sınırları içerisinde yaklaşık 114 km uzunluğundaki 380 kV Eser-Bağlum Enerji İletim Hattı projesinin tesis edilmesi ve işletilmesi planlanmaktadır. Söz konusu proje için Çevresel Etki Değerlendirmesi (ÇED) Yönetmeliğinin 9. Maddesi gereğince aşağıda belirtilen tarih ve saatlerde faaliyetle ilgili Halkı Bilgilendirmek, görüş ve önerilerini almak için "Halkın Katılımı Toplantısı" yapılacaktır. Halkımıza saygı ile duyurulur.

<b>Toplantı Yeri</b>	: Çubuk Belediyesi Toplantı Salonu
<b>Toplantı Yerinin Adresi</b>	: Atatürk Caddesi Belediye İşhanı Çubuk/ANKARA
<b>Toplantı Tarihi</b>	: 12.08.2013
<b>Toplantı Saati</b>	: 11.00
<b>Toplantı Yeri</b>	: Kırıkkale Organize Sanayi Bölge Müdürlüğü Toplantı Salonu
<b>Toplantı Yerinin Adresi</b>	: Kızılırmak Cad. No:1, Yahşıhan/KIRIKKALE
<b>Toplantı Tarihi</b>	: 13.08.2013
<b>Toplantı Saati</b>	: 14:00

**Proje Sahibi :**

**TEİAŞ Genel Müdürlüğü**

Çevre ve Kamulaştırma Dairesi Başkanlığı

Nasuh Akar Mah. Türkocağı Cad. No: 2 06520 Çankaya-ANKARA

**Tel :** 0 312 203 86 11

**Faks:** 0 312 203 87 17

**TEİAŞ 8. İletim Tesis ve İşletme Grup Müdürlüğü**

Macun Mahallesi, Fatih Sultan Mehmet Bulvarı No:254, Yenimahalle-ANKARA

**Tel :** 0 312 397 24 00

**Faks:** 0 312 397 24 14

**ÇED Raporunu Hazırlayan Kuruluş:**

ELTEM-TEK Elektrik Tesisleri Mühendislik Müteahhitlik Danışmanlık ve Tic. A.Ş.

Ziyabey Cad. 1419. Sok. No:14 06520, Balgat-ANKARA

**Tel :** 0 312 285 13 83

**Faks:** 0 312 287 08 25

# **APPENDIX-7**

## **INVITATION DOCUMENTS**

Sayı: 48331039-220-6635  
Konu: ACWA Power Kırıkkale Doğalgaz Kombine  
Çevrim Santrali Projesi

19.04.2013

MGS PROJE MÜŞAVİRLİK MÜHENDİSLİK TİCARET LTD. ŞTİ.'NE  
(Şehit Cevdet Özdemir Mah. 1351. Sokak No:1/7 06460 Çankaya Ankara)

İlgi:MGS Proje Müşavirlik Mühendislik Ticaret Ltd. Şti.'nin 05.04.2013 tarihli ve 614 sayılı yazı,

Kırıkkale İli, Yahşıhan İlçesi, Kılıçlar Beldesi sınırları içerisinde ACWA Güç Elektrik İşletme ve Yönetim Sanayi ve Ticaret Ltd. Şti. tarafından yapıлып işletilmesi planlanan "ACWA Power Kırıkkale Doğalgaz Kombine Çevrim Santrali Projesi" hakkında, ÇED Yönetmeliğinin EK-III'de yer alan ÇED Genel Formatı çerçevesinde hazırlanan ve Bakanlığımıza sunulan dosya ile ilgili ÇED Yönetmeliği'nin 8. Maddesi gereğince ÇED süreci başlatılmış bulunmaktadır.

“ACWA Power Kırıkkale Doğalgaz Kombine Çevrim Santrali Projesi”ne ilişkin ÇED Yönetmeliğinin 9. Maddesi gereğince ÇED sürecine halkın katılımını sağlamak, halkı proje hakkında bilgilendirmek, görüş ve önerilerini almak amacıyla 23.05.2013 tarihinde Halkın Katılımı Toplantısının Kırıkkale Valiliği Çevre ve Şehircilik İl Müdürlüğünce düzenlenmesi, proje yeri hakkında bilgilenmek, görüş ve önerilerini bildirmek isteyen komisyon üyelerinin Kırıkkale Valiliği Çevre ve Şehircilik İl Müdürlüğü ile irtibata geçmeleri Bakanlığımızca uygun görülmüştür. Bu amaçla ÇED Yönetmeliğinin 9. Maddesi gereğince proje sahibi tarafından; toplantı tarihini, saatini, yerini ve konusunu belirten bir ilanın ulusal düzeyde yayımlanan bir gazete ile o yörede yayımlanan yerel bir gazetede toplantı tarihinden en az 10 gün önce yayımlanması gerekmektedir.

Söz konusu proje için Kapsam ve Özel Format Belirleme Toplantısı 27.05.2013 günü saat 14:00'da gerçekleştirilecektir. Biriminizin/kurumunuzun yasal yetki, görev ve sorumlulukları çerçevesinde projenin türü de dikkate alınarak kurumunuz adına görüş vermeye yetkili kılınmış, yeterli mesleki bilgi ve deneyime sahip, komisyon üyesi olarak bir temsilcinizin ekte sunulan ÇED Başvuru Dosyası hakkında görüş ve düşüncelerini belirtmek üzere gerekli dokümanlarla birlikte (harita, plan, teknik bilgi vb.) Çevre ve Şehircilik Bakanlığı'nın Vekaletler Caddesi, No:1 Bakanlıklar-Ankara adresinde bulunan, 3. kat 3 nolu Toplantı Salonu'nda, komisyonun ilk toplantısında ve ÇED Sürecinde müteaddit defalar yapılacak toplantılarda hazır bulunmasının sağlanması katılım sağlanamadığı takdirde kurum/kuruluş görüşünüzün yazılı olarak toplantı tarihinden önce Bakanlığımıza iletilmesi hususunda bilgilerinizi ve gereğini arz ve rica ederim.

Halit YILMAZ

Bakan a.

Genel Müdür Yardımcısı V.

EKLER :

EK-1: ÇED Başvuru Dosyası (1 adet Rapor/1 adet CD)

EK-2: Dağıtım Listesi (1 sayfa)



Kırıkkale İli, Yahşıhan İlçesi, Kılıçlar Beldesi sınırları içerisinde ACWA Güç Elektrik İşletme ve Yönetim Sanayi ve Ticaret Ltd. Şti. tarafından yapıлып işletilmesi planlanan "ACWA Power Kırıkkale Doğalgaz Kombine Çevrim Santrali Projesi"

#### DAĞITIM LİSTESİ:

- Enerji ve Tabii Kaynaklar Bakanlığı (EÜAŞ Genel Müdürlüğü)
- Enerji ve Tabii Kaynaklar Bakanlığı (MTA Genel Müdürlüğü)
- Enerji ve Tabii Kaynaklar Bakanlığı (Maden İşleri Genel Müdürlüğü)
- Kültür ve Turizm Bakanlığı (Kültür Varlıkları ve Müzeler Genel Müdürlüğü)
- Sağlık Bakanlığı (Temel Sağlık Hizmetleri Genel Müdürlüğü)
- Orman ve Su İşleri Bakanlığı (Orman Genel Müdürlüğü)
- Orman ve Su İşleri Bakanlığı (DSİ Genel Müdürlüğü)
- Orman ve Su İşleri Bakanlığı (Meteoroloji Genel Müdürlüğü)
- Orman ve Su İşleri Bakanlığı (Doğa Koruma ve Milli Parklar Genel Müdürlüğü)
- Çevre Yönetimi Genel Müdürlüğü (Su ve Toprak Yönetimi Dairesi Başkanlığı)
- Çevre Yönetimi Genel Müdürlüğü (Hava Yönetimi Dairesi Başkanlığı)
- Çevre Yönetimi Genel Müdürlüğü (Atık Yönetimi Dairesi Başkanlığı)
- Mekansal Planlama Genel Müdürlüğü (Çevre Düzeni Planları Daire Başkanlığı)
- Mekansal Planlama Genel Müdürlüğü (İmar ve Planlama ve Kentsel Tasarım Dairesi Başkanlığı)
- Endüstriyel Yatırımlar ÇED Dairesi Başkanlığı (Petrol ve Madencilik Şube Müdürlüğü)
- Endüstriyel Yatırımlar ÇED Dairesi Başkanlığı (Atık ve Kimyasallar Şube Müdürlüğü)
- Kırıkkale Valiliği (Çevre ve Şehircilik İl Müdürlüğü)
- Kırıkkale Valiliği (Gıda, Tarım ve Hayvancılık İl Müdürlüğü)
- Kırıkkale Valiliği (İl Halk Sağlığı Müdürlüğü)
- Kırıkkale Valiliği (İl Özel İdaresi Genel Sekreterliği)
- Kırıkkale Valiliği (İl Afet ve Acil Durum Müdürlüğü)
- ACWA Güç Elektrik İşletme ve Yönetim Sanayi ve Ticaret Ltd. Şti.
- MGS Proje Müşavirlik Mühendislik Ticaret Ltd. Şti.