

Dzhankeldy 500MW Wind Farm Republic of Uzbekistan



ESIA: Volume 3 –
Framework for
Environmental & Social
Management

Prepared for:



October 2022

DOCUMENT INFORMATION

| | |
|----------------------|--|
| PROJECT NAME | Dzhankeldy 500MW Wind Farm |
| 5Cs PROJECT NUMBER | 1305/001/102 |
| DOCUMENT TITLE | Framework for Environmental and Social Management Volume 3 |
| CLIENT | ACWA Power |
| 5Cs PROJECT MANAGER | Eva Muthoni Oberholzer |
| 5Cs PROJECT DIRECTOR | Ken Wade |

DOCUMENT CONTROL

| VERSION | DATE | DESCRIPTION | AUTHOR | REVIEWER | APPROVER |
|---------|------------|--------------------------------|---------|----------|----------|
| 1.0 | 11/01/2022 | ESIA Vol 3 | EMO | MKB | KRW |
| 1.1 | 21/04/2022 | ESIA Vol 3 | EMO | MKB | KRW |
| 1.2 | 13/05/2022 | Update based on EBRD comments | EMO | KRW | KRW |
| 1.3 | 19/05/2022 | Update based on ADB Comments | EMO | KRW | KRW |
| 1.4 | 27/09/2022 | | EMO/EFO | KRW | KRW |
| 1.5 | 20/10/2022 | Update based on ADB's comments | EMO | KRW | KRW |



| | | |
|---|----------------------|---|
| 1 | Financial Capital | Regardless of location, mode of delivery or function, all organisations are dependent on <i>The 5 Capitals of Sustainable Development</i> to enable long term delivery of its products or services. |
| 2 | Social Capital | |
| 3 | Natural Capital | |
| 4 | Manufactured Capital | Sustainability is at the heart of everything that 5 Capitals achieves. Wherever we work, we strive to provide our clients with the means to maintain and enhance these stocks of capital assets. |
| 5 | Human Capital | |

DISCLAIMER

5 Capitals cannot accept responsibility for the consequences of this document being relied upon by any other party, or being used for any other purpose.

This document contains confidential information and proprietary intellectual property. It should not be shown to other parties without consent from the party which commissioned it.

This document is issued for the party which commissioned it and for specific purposes connected with the above-identified project only. It should not be relied upon by any other party or used for any other purpose.

CONTENTS

| | | |
|-------|---|----|
| 1 | INTRODUCTION | 1 |
| 2 | REQUIREMENTS FOR PROJECT E&S MANAGEMENT | 2 |
| 2.1 | National Level | 2 |
| 2.2 | Lenders Requirements | 2 |
| 2.2.1 | EBRD | 3 |
| 2.2.2 | ADB | 3 |
| 2.2.3 | Equator Principles | 4 |
| 2.2.4 | WBG/IFC | 4 |
| 3 | ENVIRONMENTAL & SOCIAL MANAGEMENT SYSTEM (ESMS) | 6 |
| 3.1 | ESMS Scope | 7 |
| 3.2 | Project Company E&S Management Structures | 8 |
| 3.2.1 | Project Company E&S Policy | 8 |
| 3.2.2 | Project Company: ESMS Implementation Manual | 8 |
| 3.3 | Development of Construction Phase ESMS | 9 |
| 3.4 | Development of Operational Phase ESMS | 9 |
| 4 | E&S POLICY | 10 |
| 4.1 | Project Company E&S Policy | 10 |
| 4.2 | Contracted Parties: E&S Policies | 11 |
| 5 | IDENTIFICATION OF LEGAL AND COMPLIANCE OBLIGATIONS | 12 |
| 5.1 | Identification of Legal Requirements | 12 |
| 5.2 | Identification of ESIA Requirements | 12 |
| 5.3 | Identification of Requirements from the Statutory Authority | 12 |
| 5.4 | Identification of Requirements from the Project Lenders | 12 |
| 6 | IDENTIFICATION OF RISKS, IMPACTS & OPPORTUNITIES | 14 |
| 7 | E&S MANAGEMENT PLANS & PROCEDURES | 15 |
| 7.1 | E&S Management Plans (CESMP and OESMP) | 15 |
| 7.2 | Supporting/Complimentary Plans & Procedures | 17 |
| 7.2.1 | E&S Management Plans Prepared During ESIA Disclosure Period | 25 |

| | | |
|--------|--|----|
| 7.2.2 | Other Recommended Plans and Procedures | 26 |
| 8 | MONITORING | 28 |
| 8.1 | Monitoring Requirements from the ESIA | 28 |
| 8.2 | Monitoring Data | 28 |
| 9 | ORGANISATIONAL CAPACITY | 30 |
| 9.1 | Roles and Responsibilities | 30 |
| 9.1.1 | Project Developer | 30 |
| 9.1.2 | Project Company (Accountable Party) | 32 |
| 9.1.3 | EPC Contractor / O&M Company (Responsible Party) | 33 |
| 9.2 | Environmental & Social Awareness and Training | 38 |
| 9.2.1 | Type of Training Sessions | 38 |
| 9.2.2 | Planning of Training | 38 |
| 9.2.3 | Content of Training Sessions | 39 |
| 9.2.4 | Training Records | 40 |
| 10 | AUDIT PROGRAMME | 41 |
| 10.1 | Internal Audits | 41 |
| 10.2 | ACWA Power Corporate Audits | 41 |
| 10.3 | Lenders Monitoring and Reporting | 41 |
| 11 | NON-CONFORMITY AND CORRECTIVE ACTION | 42 |
| 11.1 | Corrective Action | 43 |
| 12 | EMERGENCY PREPAREDNESS AND RESPONSE | 44 |
| 12.1 | Incidents | 45 |
| 13 | STAKEHOLDER ENGAGEMENT | 46 |
| 13.1 | Grievance Mechanism | 46 |
| 13.1.1 | Worker Grievances | 46 |
| 13.1.2 | Third-Party Grievances | 47 |
| 14 | COMMUNICATION | 48 |
| 15 | DATA MANAGEMENT AND RECORD KEEPING | 49 |
| 16 | REVIEW | 50 |

LIST OF ABBREVIATIONS

| ABBREVIATION | MEANING |
|--------------|---|
| ADB | Asian Development Bank |
| CESMP | Construction Environmental and Social Management Plan |
| EBRD | European Bank for Reconstruction & Development |
| EPC | Procurement and Construction |
| ESAP | Environmental & Social Action Plan |
| ESIA | Environmental & Social Impact Assessment |
| ESMP | Environmental & Social Management Plan |
| ESMS | Environmental and Social Management System |
| GBVH | Gender Based Violence & Harassment |
| HSSE | Health, Safety Security and Environment |
| IFC | International Finance Corporation |
| OESMP | Operation Environmental and Social Management Plan |
| PR | Performance Requirement |
| PS | Performance Standard |
| SCEEP | State Committee on Ecology & Environmental Protection |
| SEA | Sexual Exploitation & Abuse |
| SEP | Stakeholder Engagement Plan |
| SH | Sexual Harassment |
| 5 Capitals | 5 Capitals Environmental & Management Consultancy |

1 INTRODUCTION

This document presents the Framework for Environmental & Social Management following on from the ESIA for the Dzhankeldy 500 MW Wind Farm ("the Project").

This framework has been informed by the outcomes of the ESIA and has been developed to establish structures for the management of Environmental and Social risks, impacts, opportunities and compliance associated with both the construction, commissioning and operational phases of the Project. The Framework is intended to outline systematic structures and management programmes that will comprise the respective construction, commissioning and operational phase Environmental and Social Management Systems (ESMS).

In order to implement the mitigation and management measures established in the ESIA (Volume 2), specific management programmes will be developed to incorporate these mechanisms, as well as the requirements of the local regulator, State Committee on Ecology and Environmental Protection (SCEEP) and the Project Lenders. Such documented information will be in the form of Project-specific Construction Environmental and Social Management Plan (CESMP) and Operation Environmental and Social Management Plan (OESMP) (and complimentary plans/procedures); to be developed prior to the commencement of construction, commissioning and operations respectively.

This framework has also been prepared to ensure alignment with applicable elements of the established ACWA Power Project Company E&S Policy template and related ESMS Implementation Manual, which is intended to ensure consistent and structured E&S project management between ACWA Power projects.

2 REQUIREMENTS FOR PROJECT E&S MANAGEMENT

The following applicable requirements relate to the need for the Project to implement formal or structured Environmental & Social Management Systems (ESMS), or related policies, management programmes and or other E&S management processes.

These requirements are applicable during all stages of project implementation, following planning and initial permitting (i.e. construction, commissioning, operations, decommissioning and closure).

2.1 National Level

The regulatory body in Uzbekistan responsible for the regulation of the activities within the country that relate to ecology, environmental protection and use of natural resources is the State Committee on Ecology & Environmental Protection (SCEEP).

The main Environmental Protection Law in Uzbekistan is the Law on Nature Protection, 1992 as amended in 2019. This law provides legal, economic, and organisational basis for the conservation of the environment and the rational use of natural resources. Article 25 of this law states that the State Environmental Expertise (SEE) is a mandatory measure for environmental protection, preceded to decision making process. In addition, the law prohibits the implementation of any Project without approval from SCEEP.

In their conclusions for the Dzhankeldy 500MW National EIA Stage I Preliminary Statement of Environmental Impact, SCEEP requires the implementation of the Project specific Environmental Management Plan and the Environmental Monitoring Plan.

2.2 Lenders Requirements

It is understood that ACWA Power are seeking project finance from the following lenders:

- European Bank for Reconstruction and Development (EBRD) Environmental and Social Policy (2019) and Performance Requirements; and
- Asian Development Bank (ADB).

As part of ACWA Power's internal E&S requirements, all ACWA Power projects are required to comply with IFC Performance Standards and IFC EHS Guidelines. As such the Project needs to be in compliant with IFC requirements.

2.2.1 EBRD

EBRD has an internal Environmental and Social Policy (2019) and a set of specific Performance Requirement (PRs) covering key environmental and social components for consideration, assessment and management in their investments. These reflect EBRD's commitments to promote EU environmental standards as well as the European Principles for the Environment in their investments.

Performance Requirement 1 (PR1) on Assessment and Management of Environmental and Social Impacts and Issues, sets the requirements for requires Clients to establish and maintain an Environmental and Social Management System (ESMS) *'appropriate to the nature and scale of the project and commensurate with the level of its environmental and social impacts and issues in line with GIP. The objective of such a management system is to integrate the implementation of environmental and social requirements into a streamlined and coordinated process and to embed it in the main operational activities of the client assessment of impacts and issues.* In addition, projects are required to establish an overarching policy that defines the project's environmental and social objectives. Also, and ESMP will be developed based on the outcome of the ESIA and stakeholder engagement process.

2.2.2 ADB

ADB Safeguard Requirements 1: Environment outlines the requirements that clients are required to meet when delivering environmental safeguards for projects supported by ADB.

Under this Safeguard, projects are required to develop a Environmental Management Plan (EMP) and will include the 'proposed mitigation measures, environmental monitoring and reporting requirements, emergency response procedures, related institutional or organizational arrangements, capacity development and training measures, implementation schedule, cost estimates, and performance indicators'.

ADB Safeguard 2: Outlines the requirements that clients are required to meet in delivering involuntary resettlement safeguards to projects supported by ADB. This includes enhancement and/or restoration of the livelihoods of all displaced persons in real terms relative to pre-project levels; and to improve the standards of living of the displaced poor and other vulnerable groups; undertake meaningful stakeholder consultations and information disclosure; establishing a grievance mechanism; and implementation of the resettlement plan and monitoring.

ADB SOCIAL PROTECTION STRATEGY (2001)

The Project will comply with ADB Social Protection Strategy (2001) which is defined as the set of policies and programs designed to reduce poverty and vulnerability by promoting efficient

labour markets, diminishing people's exposure to risks, and enhancing their capacity to protect themselves against hazards and interruption/loss of income.

The Social Protection Strategy spells out the scope of social protection and commitment of the ADB to develop priority interventions in five major elements:

- Labour market policies & programs designed to generate employment, improve working conditions & promote the efficient operations;
- Social insurance programs to cushion the risks associated with unemployment, ill health, disability, work-related injury & old age;
- Social assistance and welfare service programs for the vulnerable groups with inadequate means of support, including single mothers, the homeless, or physical or mentally challenged people;
- Micro and area-based schemes to address vulnerability at the community level, including micro insurance, agricultural insurance, social funds and programs to manage natural disasters; and
- Child protection to ensure the healthy and productive development of children.

At the Project level the Strategy will be applicable in the following areas:

- Compliance with internationally recognised labour standards and requirements;
- Compliance with ILO core labour standards; and
- Ensure that appropriate actions are implemented to ensure ADB financed procurement of goods and services, contractors, sub-contractors etc are in compliance with core labour standards.

2.2.3 Equator Principles

It is understood that the Project will seek financing from International Financial Institutions (IFIs) that are signatories of the Equator Principles (EP). The EP IFI's therefore require their borrowers to ensure compliance with the Equator Principles IV (2020).

Principle 4 (Environmental and Social Management System and Equator Principles Action Plan), requires the borrower to develop or maintain an Environmental and Social Management System (ESMS). Further, an Environmental and Social Management Plan (ESMP) is required to address issues raised in the assessment process.

2.2.4 WBG/IFC

Note: IFC is not involved in financing of this Project, however ACWA Power internal policy is to comply with the IFC Performance Standards and applicable WBG EHS Guidelines. As such, these requirements are stated in the ESIA.

In accordance with IFC PS1, the project will, 'establish and maintain an ESMS appropriate to the nature and scale of the project. The ESMS will incorporate the following elements: (i) policy; (ii) identification of risks and impacts; (iii) management programs; (iv) organizational capacity and competency; (v) emergency preparedness and response; (vi) stakeholder engagement; and (vii) monitoring and review.'

3 ENVIRONMENTAL & SOCIAL MANAGEMENT SYSTEM (ESMS)

The Project ESMS will provide a systematic structure and approach to enable the effective implementation and management of environmental & social risks, impacts, opportunities and related compliance.

Effective management of environmental & social issues will include the following fundamental components as part of the robust ESMS:

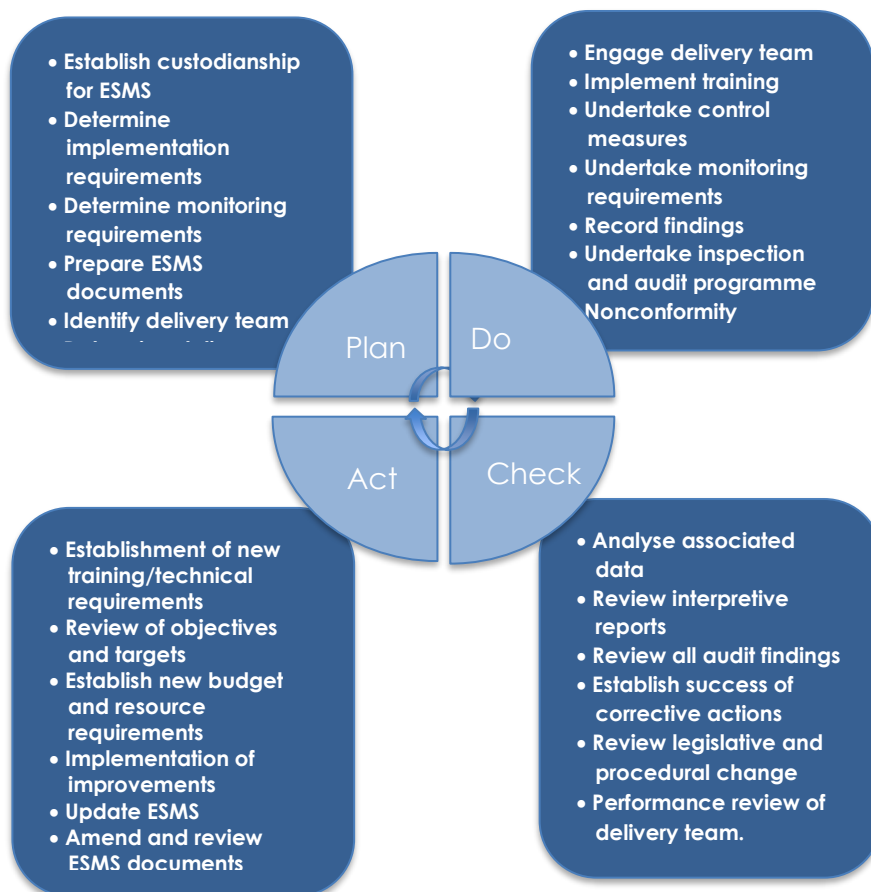
- Project specific policies related to the environmental and social considerations (including labour, HR and external stakeholders & affected communities).
- Project-based E&S Objectives, Targets & Programme.
- Applicable environmental & social legal requirements and other compliance obligations (such as those required by lenders);
- Environmental & Social aspects and potential impacts, as early as possible for construction, commissioning and operation phase planning, including the incorporation of environmental and social considerations into staffing requirements, process plans, programming, work orders, required authorisations, and site layout;
- Environmental & Social professionals, who have the experience, competence, and training necessary to assess and manage environmental impacts and risks, and carry out specialised environmental & social management functions including the preparation of Project or activity specific plans and procedures that incorporate the technical requirements presented in this document;
- Prioritisation of management programmes/ strategies with the objective of achieving an overall reduction of risk to human wellbeing and the environment, focusing on the prevention of irreversible and / or significant impacts;
- Favouring strategies (where possible) that eliminate the cause of the impact at its source, for example, by selecting less hazardous materials or processes that avoid the need for environmental controls;
- When impact avoidance is not feasible, incorporating controls to reduce or minimise the possibility and/or magnitude of undesired consequences, for example, with the application of pollution controls to reduce the levels of emitted contaminants;
- Preparing workers, informing and co-operating with nearby communities and relevant stakeholders to respond to emergencies, accidents, including providing technical and financial resources to effectively and safely control such events, and restoring workplace and community environments; and
- Improving environmental performance (i.e. for continual improvement) through a combination of ongoing monitoring of facility performance and effective accountability.

Initial implementation of the ESMS will focus on setting and reviewing requirements, determining custodianship within the project team, identifying budgets, establishing target ranges for performance and establishing appropriate data gathering techniques and controls.

Performance ranges will be refined on a regular basis as more data becomes available, in turn enabling more accurate strategy development and benchmarking. As such, the ESMS documents will be treated as living documents, to be updated within a continuous process of improvement.

An outline implementation process for ESMS is illustrated in the figure below.

Figure 3-1 Implementation Process



3.1 ESMS Scope

The Project will develop and implement ESMSs for the respective construction and operational phases. The scope will need to include:

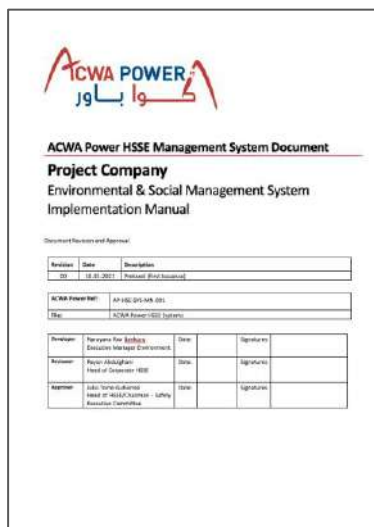
- Physical elements of the project to set the boundaries of the ESMS scope (i.e. this will include the projects physical footprint and applicable associated facilities;
- Project related activities being undertaken (and relevant to that phase of the project e.g. for construction, commissioning, operation, decommissioning and if necessary, post closure);
- Compliance with applicable national regulation, lender requirements and loan covenants (including from the ESAP);
- Detailed mitigation and management measures required following construction, commissioning and operational impacts identified from the ESIA;
- Roles and responsibilities for appropriate management organisational units;
- Key risks and management requirements related to primary supply chains (which can reasonably be managed), and;
- Requirements for monitoring and reporting, including measures for inspection, audit, review and preventative action.

3.2 Project Company E&S Management Structures

3.2.1 Project Company E&S Policy

ACWA Power has a template E&S Policy structure for Project Companies to ensure consistent policy development across its assets. Please refer to the 'E&S Policy' chapter below for further details.

3.2.2 Project Company: ESMS Implementation Manual



ACWA POWER
اكوا باور

ACWA Power HSSE Management System Document
Project Company
Environmental & Social Management System
Implementation Manual

Document Revision and Approval:

| Revision | Date | Description |
|----------|------------|-------------------------|
| 001 | 18.01.2017 | Prepared (First Issued) |

ACWA Power Ref: AP-ESQ-01/001-001
Date: ACWA Power/ESQ Systems

| Revision | Prepared For Approval | Date | Signature |
|----------|--|------|-----------|
| 001 | Project Management Head of Operations/HSSE | Date | Signature |
| 002 | Head of HSSE/Environment - Safety Responsible Committee | Date | Signature |

Besides the aforementioned E & S Policy template, the Project Company will align its E&S management with the 'Project Company - Environmental and Social Management System: Implementation Manual'. This manual is a corporate document issued to all Project Companies.

The purpose of the document is to provide guidelines to ensure that key elements related to Environmental & Social management are implemented consistently by established ACWA Power Project Companies at the projects that are under ACWA Power ownership or partnership.

3.3 Development of Construction Phase ESMS

As the overall accountable party for E&S compliance and management, the Project Company will develop and implement the project specific E&S Policy. However, the main construction phase ESMS will be developed and implemented by the Engineering, Procurement and Construction (EPC) Contractor. This will be contractually captured on in the EPC Contract.

The construction phase ESMS will align with the Project Company's E&S Policy requirements, this E&S Management Framework and the ACWA Power: Project Company's ESMS Implementation Manual.

The EPC Contractor's ESMS will ensure coverage of all potential environmental and social risks, impacts, opportunities and related compliance associated that fall under the scope of the Project's construction phase (including potential impacts related to sub-contractors and key E&S risks in supply chains that can be influenced). This will include commissioning activities and post-construction activities such as site demobilisation, restoration of land used during construction etc.

3.4 Development of Operational Phase ESMS

The operational phase ESMS will be developed and implemented by the O&M Company and will align with the E&S Policy established by the Project Company. This will be contractually captured on in the O&M Contract.

The O&M Company's ESMS will ensure coverage of all potential environmental and social risks, impacts, opportunities and related compliance associated that fall under the scope of the Project's operational phase (including potential impacts related to sub-contractors and/or other suppliers that can be influenced).

4 E&S POLICY

The Project will need to develop clear statements that define policy, commitments and related objectives with regard to environmental and social issues/compliance and management which are project specific.

4.1 Project Company E&S Policy

ACWA Power has a template E&S Policy structure for Project Companies to ensure consistent policy development across its assets. It is designed to align with the overarching ACWA Power corporate level policies, whilst ensuring that legal and lender requirements are captured.

The Project Company's E&S Policy will be prepared based on this template, which includes commitments to:

- Comply with relevant environmental & social legal, contractual, financing requirements and obligations. Including applicable international treaties and protocols, national legislation, permitting conditions and our lenders requirements.
- Implement a risk-based Environmental & Social Management System (ESMS) that aligns with good international practices and conforms with the IFC Performance Standards (as a minimum) and other applicable lender requirements for ESMS.
- Implement measures to manage and reduce natural resource consumption, whilst implementing specified management measures to prevent pollution that are consistent with assessment documentation, permitting and lender conditions.
- Engage with employees and stakeholders on environmental & social issues and implement a robust Grievance Redress Mechanism process for project staff and third-party stakeholders.
- Uphold, respect, protect and fulfil human rights in accordance with the International Bill of Human Rights and any other instruments of international human rights such as those relating to the rights of women and children.
- Employ staff on the basis of equal opportunities and non-discrimination, whilst adhering to the ILO Conventions stated in IFC PS2 for worker management.
- Ensure staff receive environmental & social information, training and instructions on environmental & social leadership applicable to their activities and duties.
- Not accept or tolerate GBVH/SEA/SH in any form.
- Establish processes to identify, investigate and remedy instances of GBVH/SEA/SH. whilst encouraging reporting of such instances, providing support to those involved and ensuring their dignity, respect and confidentiality.
- Set indicators to promote and assure environmental & social performance of key supply chains and service providers.

- Implement systematic feedback systems to monitor, audit and report on environmental & social management and performance.
- Annually review this environmental & social policy statement and set performance and management targets to enable continual improvement within the ESMS to be achieved.

The policy will be signed by the top management of the project company, displayed on site and will be circulated to Project contractors for their compliance.

4.2 Contracted Parties: E&S Policies

The EPC Contractor and O&M Company may also develop E&S Policies that align with the Project Company's overarching project specific E&S policy.

Where an E&S Policy is not developed by the Project's contracted parties, the respective construction and operational phase ESMSs (developed by the contracted parties) will be spearheaded on the overarching E&S Policy of the Project Company.

5 IDENTIFICATION OF LEGAL AND COMPLIANCE OBLIGATIONS

5.1 Identification of Legal Requirements

During the development of the ESMS, the applicable environmental and social legal requirements should be identified and documented, including:

- Uzbekistan Legislation and Regulations; and
- Applicable International Treaties and Conventions, signed and/or ratified by Uzbekistan.

5.2 Identification of ESIA Requirements

Volume 2 of the ESIA has developed Project and/or site-specific mitigation, management & monitoring measures that must be incorporated into the respective construction, commissioning and operational phase of the project.

Following approval of the ESIA by the regulatory authority and project lenders, these stated measures are conditions of the approval.

5.3 Identification of Requirements from the Statutory Authority

The 'conclusions' (or other conditional requirements) issued by State Committee on Ecology and Environmental Protection to the Project EIA must be reviewed to ensure that all construction, commissioning and operational related conditions established are managed accordingly. Non-compliance with the State Committee on Ecology and Environmental Protection conclusions may result in a breach of legislation and permitting requirements. The conclusions shall be maintained as part of the ESMS.

5.4 Identification of Requirements from the Project Lenders

In response to the ESIA, EBRD will establish an Action Plan that identifies Environmental and Social requirements for the project commensurate with or supplementary to the ESIA. This will be an Environmental & Social Action Plan (ESAP) while an Equator Principles Action Plan (EPAP) will be issued by financing institutions signatory to the Equator Principles. Requirements of the action plan will be a covenant of the Project loan. In addition, ADB will also establish Compliance Action Plans (CAP) in response to the ESIA.

During the development of the ESMS', EBRD's and ADB's action plan for the Project (and EPAP from EPFIs) must be reviewed to ensure that all related conditions are included for compliance management. It is highlighted that non-compliance with the lenders' requirements could impact financial disbursement and other factors.

6 IDENTIFICATION OF RISKS, IMPACTS & OPPORTUNITIES

One of the principal stages in the development of the Project's ESMS will be the development of a Project specific aspects/risks register linking to potential environmental or social impacts associated with the relevant activities being undertaken at that phase of the project.

Once environmental & social aspects and associated risks have been identified and documented (i.e. specifically in accordance with the required construction methods statements or operational activities), associated controls should be developed that are commensurate to the level of anticipated severity, likelihood and any statutory or lender requirements. The identification of risks and impacts is expected to be primarily aligned with the items identified in the ESIA, but may include additional items relates to specific working methods.

When identifying the aspects/risks and associated environmental or social impacts the following will be taken into account:

- Risks, impacts and opportunities linked to the Project activities;
- Change, including planned or new development and or new/modified activities;
- Abnormal conditions and reasonably foreseeable emergency situations;
- Project timescales and potential impacts associated with seasonality;
- Stakeholder perception;
- Compliance obligations;
- Risks inherent in the supply chain in addition to those on-site; and
- Linkages with the Project's Health and Safety Management System.

The identification of aspects/risks and impacts should be documented, linked to associated proposed controls and updated as and when Project or environmental & social circumstances change.

7 E&S MANAGEMENT PLANS & PROCEDURES

Once environmental & social aspects and associated risks have been identified and documented, associated controls will be developed that are commensurate to the level of anticipated severity, likelihood and any statutory or lender requirements. The identification of risks and impacts is expected to be primarily aligned with the items identified in the EIA/ESIA but may differ depending on specific working methods of the EPC Contactor / O&M Company.

7.1 E&S Management Plans (CESMP and OESMP)

The key E&S management plans will be the CESMP and OESMP; respective to construction and operations.

The CEMSP and OESMP will comprise a stand-alone document structured to detail how environmental and social risks, impacts, opportunities and compliance will be managed and monitored. This shall be the top-level management plan document prepared by the EPC Contractor and O&M Company respectively. The CESMP and the OESMP will be prepared by the EPC Contractor and O&M Company's E&S staff or by an E&S Consultant in order to ensure they are aligned with national and lenders' requirements.

The typical content of a CESMP/OESMP has been outlined below. This is not mandatory to be structured in this manner, but it is expected that the headings and sub-headings as a minimum are captured within the respective CESMP/OESMPs.

- INTRODUCTION
 - Background of Environmental Permitting
 - Objectives of the CESMP/OESMP
 - Scope of the CESMP/OESMP
 - Limitations
 - Structure of the CESMP/OESMP
- PROJECT DESCRIPTION
 - Project Rationale and Background
 - Project Location
 - Land Use and Potential Sensitive Receptors
 - Land Ownership
 - Land Use
 - Sensitive Receptors
 - Overview of Project Components
 - Overview of Associated Facilities

- Overview of Construction/Operational Works and Workforce Requirements
- Overview of Construction/Operational Facilities
- Project Schedule (for CESMP)
- REGULATORY FRAMEWORK
 - Overview of Regulatory Framework and Compliance Obligations
 - o Regional and International Treaties and Conventions (the host country is a signatory of)
 - o Federal Legislation
 - o Lenders Requirements
 - o Environmental Standards
- ENVIRONMENTAL AND SOCIAL MANAGEMENT
 - Summary of Environmental and Social Management System (ESMS)
 - Reference to E&S Policies
 - o Applicable EPC/O&M Corporate Level E&S Policies
 - o Project Company E&S Policy Level
 - Statement of other supporting/complementary Plans and Procedures
 - Organisational Structure
 - o Host country regulator
 - o Lenders
 - o Project Company
 - o EPC Contractor/O&M Company
 - o Sub-contractors
 - HSE Roles and Responsibilities
 - Environmental Awareness and Training
 - o Environmental & Social Induction Training
 - o Toolbox Talk Environmental & Social Training Sessions
 - o CESMP/OESMP Training
 - Competency Needs and Records
 - Internal and External Communications
 - o Internal Communication
 - o External Communication
 - o Liaison with Regulator
 - Inspections and Audits
 - o Daily and Weekly Inspections
 - o Internal Audits
 - o Annual Internal Audits
 - o External Audits
 - Non-conformity, Corrections and Corrective Action
 - o Non-Conformity, Investigation and Response
 - o Incident Definition, Reporting, Investigation and Response

- Corrections and Corrective Actions
 - Control of Records
- MITIGATION, MANAGEMENT AND MONITORING
 - Terrestrial Ecology
 - Air Quality
 - Noise & Vibration
 - Soil, Geology, Groundwater and Surface Water
 - Traffic & Transportation
 - Infrastructure & Utilities
 - Archaeological and Cultural Heritage
 - Landscape and Visual Amenity
 - Shadow Flicker
 - Socio-Economic
 - Solid Waste & Wastewater Management
 - Community Health, Safety & Security
 - Labour & Working Conditions
 - Influx Impact Assessment
 - Human Rights Impact Assessment
 - Climate Affairs
- MONITORING SUMMARY
- EMERGENCY PREPAREDNESS AND RESPONSE OVERVIEW
- APPENDICES

Other key plans to be implemented include:

- Resettlement Action Plan (RAP).
- Stakeholder Engagement Plan (SEP)

7.2 Supporting/Complimentary Plans & Procedures

In alignment with the expected Project impacts (based on ESIA Volume 2), the following table provides a list of plans and procedures that are expected as a minimum to be linked to the CESMP and/or OESMP. This includes some key requirements for inclusion to each plan.

Table 7-1 ESIA Required Plans and Procedures

| PLAN / PROCEDURE | PROJECT PHASE | PURPOSE AND KEY REQUIREMENTS |
|--|--|---|
| Biodiversity Action Plan / Species Action Plan | Pre-Clearance, Pre-Construction, Construction, Operation & Decommissioning | <p>The BAP/SAP presents an overall picture on species specific baseline information and mitigation for project impacts to achieve Net Gains (NG) and No Net Loss (NNL):</p> <ul style="list-style-type: none"> Species Action Plans, for CH species Asian Houbara and Southern Even-fingered Gecko with strategy for NG Species Action Plans for PBF species with strategy for NNL <p>The plan clearly outlines requirements that will be in place for construction, operation and decommissioning works, to protect species of conservation concern. The plans will include:</p> <ul style="list-style-type: none"> Overview of the species of concern List of protocols and procedures to be taken related to biodiversity protection Establishment of No-Go Zones Trainings for Staff to increase awareness of prohibited actions related to biodiversity Monitoring Program Reporting Requirements Roles & Responsibilities. |
| Flora Conservation Action Plan | Pre-Construction & Construction, | This plan provides the mitigation measures that will be implemented to ensure conservation of sensitive flora species that may be impacted by the project construction. As per the species-specific protocols outline in the plan the project footprint will be surveyed for the collection of seeds for replantation and specimens for translocation. |
| Reptile Relocation Plan | Pre-Construction & Construction | The Reptile Relocation Plan outlines the pre-construction survey, identification of release sites and relocation methodology as well as the specification for livestock and tortoise exclusion fencing required to mitigate construction impacts on two reptile species of concern; the Southern Even-fingered Gecko and the Russian Tortoise. |
| Breeding Birds Protection Plan | Pre-Construction & Construction | Breeding Bird Protection Plan provides the mitigation measures for the protection of sensitive breeding bird species that may be impacted from the project construction |
| Biodiversity Management Plan (BMP)/Biodiversity Monitoring and Evaluation Plan (BMEP) | Pre-construction, Construction, Commissioning & Operation | <p>The BMP outlines the mitigations and specific actions to be implemented in order to reduce the impacts to the biodiversity during the pre-construction, construction, commissioning and operational phases.</p> <p>The plan contains the Biodiversity Monitoring & Evaluation Programme (BMEP) which captures the monitoring and adaptive evaluation requirements, roles and responsibilities of entities involved.</p> |
| Compensation Offset Plan | Post-construction | The purpose of the plan is to outline in detail the compensation offsets against all identified impacts |

| PLAN / PROCEDURE | PROJECT PHASE | PURPOSE AND KEY REQUIREMENTS |
|---|---|--|
| | | of high significance to Critical Habitat species Southern Even Fingered Gecko and Asian Houbara |
| Restoration Action Plan | Post-construction | <p>The purpose of the plan is to provide the methodology for post-construction restoration of laydown and other areas for re-wilding and restoration of native habitat types.</p> <p>The requirements will include the areas to be restored as well as the required monitoring post-restoration, to be integrated into the Operations BMEP.</p> |
| Collision Risk Management Plan | Pre-operation and Operation | <p>This plan outlines the site-wide species specific Shut Down on Demand (SDOD) mitigation strategy provided by Identiflight, an automated camera based SDOD system and also provides the adaptive cut-in speed curtailment programme for bats.</p> <p>It includes:</p> <ul style="list-style-type: none"> • Mitigation measures for reducing collision risk to birds and bats • Potential Biological Removal Thresholds • Shut Down on Demand (SDOD) • Cut-in Speed Curtailment • Adaptive Management • Fatality Monitoring • Reporting requirements <p>Roles and Responsibilities</p> |
| Post-construction Fatality Monitoring (PCFM) | Operation | <p>Monitoring will be undertaken to capture data on mortalities and provide adaptive management if needed. The monitoring will be continued for up to 5 years or until the risk is considered 'negligible' in consultation with the lenders.</p> <p>This plan will outline the on-going monitoring and management plan for bird mortality along the WTGs and overhead transmission lines. It includes:</p> <ul style="list-style-type: none"> • Methodology for monitoring bird mortality along OHTL corridor; • Thresholds for sightings/mortality counts that will trigger adaptive management and/or compensatory measures • Monitoring program • Reporting requirements. • Roles and Responsibilities |
| Livestock Management Plan | Construction & Operation | <p>To provide management measures for livestock carcasses to minimise food availability to vultures in the project footprint thereby reducing attraction of these bird species and risk to these bird species.</p> <p>The plan will also include mitigation and management measures to avoid adverse impact to the livelihood of herders who use the site.</p> |
| Waste Management Plan | Construction, Commissioning & Operation | <p>To identify site specific requirements for waste and wastewater treatment, containment of wastes (segregation, storage area specifications and locations), collection methodologies & transport</p> |

| PLAN / PROCEDURE | PROJECT PHASE | PURPOSE AND KEY REQUIREMENTS |
|---|---|--|
| | | (identification of licensed contractors and the process to engage), treatment/disposal (identification of licensed treatment and disposal sites), record keeping and reporting requirements related to waste and wastewater. To include measures to limit instances of contamination to soils and groundwater. |
| Occupational Health & Safety Plan | Construction, Commissioning & Operation | <p>Identify the required controls for worker health and safety during the construction, commissioning and operational phases. As a minimum, this plan will include:</p> <ul style="list-style-type: none"> • Means of identifying and minimising, so far as reasonably practicable, the causes of potential hazards to workers. • Provision of preventive and protective measures, including modification, substitution, or elimination of hazardous conditions or substances. • Provision of appropriate equipment to minimise risks, and requiring and enforcing its use. • Training of workers, and provision of appropriate incentives for them to use and comply with health and safety procedures and protective equipment. • Documentation and reporting of occupational accidents, diseases and incidents. • Emergency prevention, preparedness and response arrangements. |
| Emergency Preparedness and Response Plan | Construction, Commissioning & Operation | <p>To identify the contingencies put in place for a variety of potential emergency situations relevant to the construction, commissioning & operational phases. The plans will outline the response mechanisms, roles and responsibilities, training requirements, internal communication, equipment and relevant engagement with external stakeholders.</p> <p>Requirements for on-site equipment will be established based upon the potential emergency risks, including training provisions for site personnel in regard to such equipment. This plan is to include spill response and contingency in the event of accidental leaks and spills.</p> |
| Hazardous Material Storage Plan | Construction, Commissioning & Operation | <p>The plan will identify locations for hazardous material storage, storage requirements (specifications of bunds and buildings/warehouses to ensure environmental and H&S protection, segregation requirements etc.) and handling procedures to minimise environmental risk. The plan will outline record keeping as per chain of custodies, requirements for MSDS and roles & responsibilities. Staff involved in chemical management, procurement or overseeing on-site deliveries shall be specified in the plan and provided with training for the provisions of this plan (all training to be linked to the training plan).</p> |

| PLAN / PROCEDURE | PROJECT PHASE | PURPOSE AND KEY REQUIREMENTS |
|---|---|---|
| Environmental & Social Monitoring Plan | Construction, Commissioning & Operation | <p>Monitoring is required to demonstrate compliance with national environmental and social standards and lender requirements. The monitoring plan is to specify monitoring requirements for all ESIA parameters (as specified in ESIA Volume 2 – as a minimum). The plan will therefore need to include:</p> <ul style="list-style-type: none"> • What parameters need to be monitored and measured and at what locations. • The methods for monitoring measurement, analysis and evaluation to ensure valid results. • The criteria against which compliance and performance should be measured. • When and at what frequency monitoring needs to be performed. • How the results from monitoring and measurement should be analysed and evaluated (independent or internal). |
| Traffic & Transportation Management Plan | Construction, Commissioning & Operation | <p>The plan will identify any specific requirements for heavy, or oversize loads, including timings of deliveries, specific routes (to minimise disruption), engagement mechanisms with external transport authorities (as per the SEP, e.g. local government). To include measures to minimise congestion, fuel use and risks to the public and site staff. Deliveries will be guided by a Traffic Management Plan.</p> |
| Archaeological Chance Find Procedure | Construction | <p>To identify the process for identifying and responding to a potential find of archaeology in the construction working area. It will include the process for halting works in that area, sectioning off potential artefact and external communication with relevant regional authorities as consistent with SEP.</p> |
| Cultural/ Archaeological Management Plan | Construction, & Operation | <p>The Plan will be prepared to include the locations of known archaeological finds, procedures to ensure their protection, required buffer zones, reporting protocols for any damage to these sites etc.</p> |
| Working Conditions and Terms of Employment Procedure | Construction, Commissioning & Operation | <p>The EPC contractor and O&M Company will provide a plan detailing how working conditions and terms of employment are compliant with national labour, social security and occupational health and safety laws.</p> <p>The EPC Contractor and O&M Company will ensure that the following documents are prepared prior to the employment of workers.</p> <ul style="list-style-type: none"> • Employment agreements and recruitment policies; • Equal opportunities and non-discrimination policy (incorporating maternity policies and policies associated with GBVH); and |

| PLAN / PROCEDURE | PROJECT PHASE | PURPOSE AND KEY REQUIREMENTS |
|--|---|--|
| | | <ul style="list-style-type: none"> Child and forced labour policies / procedures (covering recruitment fees and arrangements, as well as document (e.g. passport) retention. |
| Human Resources Policy (and related Procedures) | Construction, Commissioning & Operation | Human resource policies and procedures will be adapted appropriate to the size of the workforce required for operation and maintenance requirements. Policies and procedures must be prepared to demonstrate consistency with the requirements of national legislation and lenders requirements. |
| Workers Accommodation Plan | Construction | This plan will outline the process and standards for the accommodation for the Project workforce. It will include accommodation areas directly managed by the Project, or rented/shared to accommodate direct Project employees and/or temporary or other contract staff (dedicated to the project). Accommodation areas in use by sub-contractor companies/staff (where staff are dedicated for the Project) will also be included. |
| Stakeholder Engagement Plan (SEP) | Construction, Commissioning & Operation | <p>To identify project stakeholders, identify communication protocols for engagement with stakeholders.</p> <p>To identify frequency or event-based communication with stakeholders (i.e. for emergencies and specific grievances).</p> <p>To detail the grievance mechanism, or provide a reference to a separate grievance mechanism for external parties.</p> |
| Resettlement Action Plan | Construction & Operational Phase | <p>Project Company, EPC Contractor & O&M Company will ensure the implementation of the RAP through:</p> <ul style="list-style-type: none"> Implementation of the RAP. Compliance monitoring <p>Unanticipated impacts especially during the construction phase.</p> |
| Grievance Mechanism | Construction, Commissioning & Operation | <p>To be included within or be linked to the SEP.</p> <p>To identify the procedure for external parties and all site staff to be able to raise issues, concerns and opportunities for improvement for any aspect of their employment on the project including issues relating to GBV/H and sexual exploitation.</p> <p>The mechanism shall be easily accessible (including for any vulnerable groups), non-discriminatory and provide a transparent process to raise concerns or complaints, which may be issued in an anonymous nature. The mechanism shall specify the roles and responsibilities of internal staff with regard to the grievance mechanism and the procedure for responding to received grievances, including the timeline for response, engagement mechanisms and record keeping.</p> |

| PLAN / PROCEDURE | PROJECT PHASE | PURPOSE AND KEY REQUIREMENTS |
|---|---|---|
| Human Rights Policy | Construction, Commissioning & Operation | <p>The statement policy will:</p> <ul style="list-style-type: none"> • Be approved at the most senior level of the company; • Informed by relevant internal and external expertise; • Stipulate the EPC's & O&M's human rights expectations of personnel, local communities, sub-contractors and other suppliers directly linked to the construction and operational phase of the project; • Be publicly available and communicated internally and to the relevant stakeholders; • Be reflected in the other policies and procedures to embed it throughout their construction and operational phase activities. |
| SEA & SH Prevention & Response Action Plan | Construction, Commissioning & Operation | <p>This plan will include specific arrangements for the Project by which SEA/SH risks will be addressed. It will include as a minimum:</p> <ul style="list-style-type: none"> • Awareness raising strategy which describes how workers (regardless of rank) and local communities will be sensitized to SEA/SH risks, and the workers responsibilities; • How the Project will provide information to employees and the communities on how to report cases of SEA & SH to through the Project's Grievance Mechanism. • The process of notifying the EPC Contractor & O&M of allegations; and • SEA/SH support groups/service providers to which survivors can be referred to and the corresponding contact details. <p>The plan will also include an Accountability & Response Framework which details how allegations of SEA/SH will be handled, including the investigation procedures and disciplinary actions for violation. It will also include procedures that clearly lay out confidentiality requirements and other safety and ethical principles for dealing with SEA/SH cases.</p> |
| Gender Based Violence & Harassment (GBVH) Policy | Construction, Commissioning & Operation | <p>The purpose of this policy will be to develop a safe, supportive, non-discriminatory workplace for all employees and create a common awareness and understanding that Gender Based Violence & Harassment, Sexual Exploitation & Abuse and Sexual Harassment have no place in this project. It will aim to create a clear system for reporting, company response and company/legal sanctions for such behaviour.</p> |
| Security Plan | Construction & Operation | <p>The security plan will be based on a security risk assessment of the reasonably foreseeable security risks (linked with security risks in the Emergency Preparedness and Response Plan), and tailored with the necessary management provisions, staffing requirements, equipment, training and defined processes to implement effective mitigation to</p> |

| PLAN / PROCEDURE | PROJECT PHASE | PURPOSE AND KEY REQUIREMENTS |
|---------------------------------------|--|--|
| | | manage or prevent these risks. The security plan will ensure applicable alignment to the necessary codes of conduct required by law enforcement under the United Nations principles for Law Enforcement Officers. |
| Community Response Action Plan | Construction & Operation | This plan will define the site action to support community stakeholders in planning, responding and recovering from the COVID-19 outbreak especially when outbreaks are directly linked to the Project workers. |
| Local Recruitment Plan | Before start of Construction & Operation | This plan will provide set of actions for the recruitment of local workforce. The plan will detail the procedure for effective recruitment of local staff, the positions that could be filled by unskilled, semi-skilled and skilled local workforce, mechanisms that will be in place to ensure there is non-discrimination of women in assessing recruitment procedures and the training to be provided for each job role. |
| Influx Management Plan | Construction | The EPC Contractor will develop an Influx Management Plan to provide a clear set of actions that will be undertaken for the management and mitigation, monitoring and evaluation of impacts related to worker influx in the Project area. |
| Local Content Plan | Construction | This plan will clearly identify the Project commitment to purchasing goods and services (where practicable without compromising on the quality and standard requirements for the Project). It will also set expectations with regards to the extent goods and services can be purchased from the local market in order to benefit local businesses without potentially leading to higher prices for local consumers. This plan will be shared with local businesses interested in providing goods and services to the Project. |
| Labour Management Plan | Construction & Operation | <p>This plan will set out responsibilities and management practices associated with the management of labour during construction and operational phase of the Project.</p> <p>It will also ensure that all personnel involved in the construction and operation of the Project EPC, subcontractors and O&M comply with the Project Company's obligations on labour management and in line with national and lenders requirements.</p> |
| Supply Chain Management Plan | Before the start of Construction | <p>The Project Company will develop a Supply Chain Management Plan will include:</p> <ul style="list-style-type: none"> • The requirement for Project Company's HR policy and procedures and worker Code of Conduct will be applied to all suppliers; • The pre-qualification assessment & process to be undertaken prior to engaging core suppliers; |

| PLAN / PROCEDURE | PROJECT PHASE | PURPOSE AND KEY REQUIREMENTS |
|--|----------------------------------|---|
| | | <ul style="list-style-type: none"> Monitoring/audits to be undertaken to evaluate suppliers' compliance and adequacy of implemented measures, etc. |
| E&S Supplier and Vendor Management Plan | Before the start of construction | ACWA Power/ Project Company will develop an E&S Supplier and Vendor Management Plan for suppliers and contractually require the EPC Contractor to undertake supplier/vendor E&S risk assessment for their suppliers and review potential supplier/vendor labour issues and risks. |
| Water Management Plan | Prior to construction | <p>The water management plan will provide the water management strategy during the construction phase of the project.</p> <p>The plan will outline the measures required for the effective management of water resources and the measures to be implemented by the EPC Contractor & its sub-contractors to reduce potential impacts to water resources in the project area. The plan will also outline monitoring requirements to ensure.</p> |
| Contractor Management Plan | Prior to construction | ACWA Power/Project Company will develop the CMP for managing and monitoring the E&S performance of the EPC Contractor and their sub-contractors in line with the E&S commitments. |
| De-commissioning Plan | De-commissioning | Decommissioning Plan will be developed 12 months prior to decommissioning, and this will include detailed methods for material re-use, recycling and disposal of wastes. |

7.2.1 E&S Management Plans Prepared During ESIA Disclosure Period

The following plans (as provided in table 7-1) have been prepared during the ESIA disclosure period some of which have been implemented as part of the pre-construction surveys¹:

- Biodiversity Action Plan;
- Flora Conservation Action Plan;
- Reptile Relocation Plan;
- Breeding Birds Protection Plan;
- Biodiversity Management Plan/Biodiversity Monitoring & Evaluation Plan (BMEP);

¹ The Flora Conservation Action Plan & Reptile Relocation Plan have been implemented as part of the pre-construction surveys.

- Compensation Offset Plan;
- Collision Risk Management Plan;
- Post-Construction Fatality Monitoring Plan;
- Livestock Management Plan; and
- Supply Chain Management Plan.

The plans below were prepared as part of the ESIA disclosure package:

- Stakeholder Engagement Plan;
 - This includes details on the grievance mechanism.
- Resettlement Action Plan.

7.2.2 Other Recommended Plans and Procedures

Besides the required ESIA plans and procedures stated above, the following plans and procedures are also recommended for development and implementation as part of the ESMS

Table 7-2 Recommended Plans and Procedures

| PLAN / PROCEDURE | PROJECT PHASE | PURPOSE AND KEY REQUIREMENTS |
|---|---|---|
| Pollution Prevention and Response Plan | Construction, Commissioning & Operation | <p>Identify site specific requirements for the prevention of pollution and how to manage pollution incidents. To include the identification of high-risk areas on a plan and the location of spill kits (and contents of spill kits).</p> <p>To identify required contact details in the event of an incident and contractors that are available on a quick response contract to assist with clean up. Where necessary this should link with the SEP for any external communications.</p> <p>To identify staff that require training in regard to the plan. The plan should include provisions for recording of any incidents in a separate register, to ensure close out and implementation of corrective and preventative actions.</p> |
| Site Inspection & Audit Plan & Procedure | Construction & Operation | <p>To specify the timing and frequency of inspections (e.g. daily, weekly walkovers) and audits (including internal & external independent audits for the lenders as appropriate).</p> <p>To detail the methodology of such inspections and audits to ensure Environmental and Social Issues required in Uzbekistan required by project lenders are adequately covered.</p> <p>For internal audits, the procedure should identify the audit scope (site, laydown areas, accommodation areas, sub-contractor areas etc.), audit criteria (e.g. CESMP, OESMP, ESMS), selection process for audit evidence, reporting format and auditor competence requirements.</p> <p>The Procedure should specify definitions of non-conformance, observations and best practices, as well as detailing the mechanisms for issuance and follow up of Non-Conformance reports, including time periods for action and the implementation of corrective and/or preventative measures.</p> |

| PLAN / PROCEDURE | PROJECT PHASE | PURPOSE AND KEY REQUIREMENTS |
|---|---|--|
| | | The process to engage with the external independent lenders' auditors should also be listed and linked with the SEP as appropriate. |
| Material handling and Storage Procedure | Construction, Commissioning & Operation | Should identify locations for material storage, storage requirements and handling procedures to minimise environmental and H&S risks. As appropriate this plan should be linked to or inclusive of the Hazardous Material Storage Plan and H&S Plan. Specific method statements regarding the handling of materials shall be detailed, as well as training requirements for staff involved in such activities. |
| Fuel & Chemical Unloading Procedure | Construction, Commissioning & Operation | To identify locations for fuel and chemical unloading, associated training requirements and associated pollution attenuation/spill response equipment that are to be in place regarding any unloading of fuel to larger tanks or chemicals to storage areas on-site. This should be linked or inclusive to the pollution prevention plan. |
| Environmental & Social Training Plan | Construction, Commissioning & Operation | To identify specific staff members for training and the type (i.e. classroom, practical, toolbox talks) how/when this is to be delivered, the frequency of training and whether follow up training provisions are required. The training should be linked to the specific content of the listed plans and procedures, or key risk activities that may be identified from on-site method statements. |

8 MONITORING

Environmental monitoring is required during both construction, commissioning and operation to evaluate whether the project is in compliance with the applicable national regulations/standards and applicable lender requirements.

8.1 Monitoring Requirements from the ESIA

The specific Environmental & Social Monitoring Plan to be developed for construction, commissioning and operation shall include measures recommended in parameter specific chapters of ESIA Volume 2 and supplemented by detailing:

- What parameters need to be monitored and measured and at what locations;
- The methods for monitoring measurement, analysis and evaluation to ensure valid results;
- The criteria against which compliance and performance should be measured;
- When and at what frequency monitoring needs to be performed;
- How the results from monitoring and measurement should be analysed and evaluated (independent or internal);

The outcomes of the monitoring regime should ensure;

- The timing of monitoring and measurement is coordinated with the need for analysis and evaluation of results;
- The results of monitoring and measurement are reliable, reproducible and traceable; and
- analysis and evaluation are reliable and reproducible and enable the project to report trends.

8.2 Monitoring Data

Monitoring results should be compared against relevant standards, permit requirements, required thresholds, received complaints, audit findings, CESMP and OESMP requirements. The Environmental and Social Management team for the EPC Contractor or O&M Company will need to define appropriate action to follow in the instance that any exceedances in monitoring limits are confirmed or adverse impacts identified, including:

- Communication protocol in the event that an exceedance is identified;
- Internal review process of recently performed maintenance and inspection;
- Review of previous monitoring data to identify any potential associated variations or trends in results;

- Recommendations for quarantine of equipment or change in work practices; and
- Review of monitoring frequency to ensure the issue does not re-occur.

The repetition of measurements is an essential part of monitoring as it detects changes over time and should alert to potentially positive or negative effects of an activity. Adverse effects should trigger a review of mitigation measures and determination of the likely source of the impact. Should no effect be detected it may demonstrate a lack of effect, success of mitigation measures or the requirement to continue monitoring over a longer period of time.

Data from the monitoring for comparison against baseline and all previous monitoring efforts to identify trends in condition and make inferences on the success of implemented mitigation measures.

9 ORGANISATIONAL CAPACITY

9.1 Roles and Responsibilities

The ESMS¹ will require competent personnel and sufficient allocation of resources to ensure effective implementation in practice.

9.1.1 Project Developer

The Project Developer will engage an E&S Manager and a Biodiversity Manager that will oversee the implementation of the project. This is required at the corporate level. The E&S Manager will be responsible for overseeing the implementation of all environmental & social monitoring requirements while the Biodiversity Manager will be responsible for overseeing all Biodiversity monitoring and management requirements.

The roles & responsibilities of the corporate level E&S management team are outlined below

E&S MANAGER

- Ensure that Project Company Environmental & Social staff are recruited as per applicable competency requirements in the ACWA Power PC ESMS Manual.
- Ensure all the management plans herein (refer to chapter 7) and within the ESAPs are prepared and implemented within the required timelines in accordance with national and lenders requirements.
- Manage training requirements for Project Company Environmental & Social staff to ensure they are trained in accordance with their responsibilities, that they have awareness of internal corporate ACWA Power Policy commitments, the ACWA Power PC ESMS Manual (and how it is implemented), project specific obligations from the ESIA, other associated E&S package documents, including the lenders ESAP.
- Review and approve Project Company E&S Policies and other documents comprising the ESMS at each project.
- Ensure the Project Company staff are appropriately reviewing and approving the ESMS documents prepared by the EPC Contractor and O&M Company and that these are in accordance with the necessary content requirements as per the ESIA, ESAP and other E&S obligations.
- Undertake periodic internal inspections of the Project site and formal audits against defined audit criteria (to include but not be limited to the aforementioned obligations).
- Issue internal findings related to internal inspections and audits, including issuance of internal non-conformances.

- Review and approve corrective action plans with respect to issued non-conformances prepared by the Project Company, EPC Contractor or O&M Company.
- If necessary, to have oversight of the Project Company in the process for E&S incident reporting, investigation and follow-up.
- Review and approve corrective action plans with respect to incident response by the Project Company, EPC Contractor or O&M Company.
- Maintain oversight of all received labour and community (or other external party) grievances and to ensure the Project Company is recording and responding appropriately in accordance with the defined ESMS processes for grievance redress.
- Collate periodic E&S reports (including E&S monitoring data) from the Project Company(s) and to ensure that data is being submitted to ACWA Power corporate via the 'Synergy Life' portal.
- Review submitted E&S data to identify issues related to compliance, or potential E&S risks that require management or other actions.
- Notify and update applicable ACWA Power corporate management as appropriate in regard to particular issues (e.g. long-standing non-conformances, E&S incidents and sensitive grievances).
- Ensure attendance at site and in meetings with lenders, regulators and third-party E&S audit teams for visits and other discussions alongside the Project Company staff.
- As applicable review and approve reports prepared by the Project Company that are to be submitted to external parties (such as lenders and regulators).

BIODIVERSITY MANAGER

- Provide technical leadership in planning, management, and implementation of biodiversity conservation and management activities at multiple Wind Farm sites.
- Represent ACWA Power on Scientific Advisory Committee during meetings with regards to adaptive management and communication with third parties.
- Undertake monitoring and evaluation of ongoing biodiversity conservation and management activities to track progress.
- Coordinate preparation of policy recommendations and position papers to strengthen biodiversity conservation to achieve targets for No Net Loss and/or Net Gain of species identified in the BAP and associated Plans.
- Prepare Executive Reports for ACWA Power and Lenders.
- Prepare annual and quarterly work plans, budgets, and technical reports on biodiversity conservation and management activities as part of the overall Biodiversity program planning and reporting cycle.
- Coordinate with E&S Manager on implementation of relevant environmental and social management plans.

- Visit the Wind Farm sites during construction and operational phases to review ongoing biodiversity monitoring and management programmes being undertaken by EPC/PC/O&M and evaluate adequacy of resources.
- During operation, the Biodiversity Manager will be responsible for contracting Wind Wildlife Specialist as needed to support with fatality monitoring, shut down on demand, etc.
- The Biodiversity Manager will be responsible for contracting a field team responsible for carcass search and livestock management implementation.

9.1.2 Project Company (Accountable Party)

The Project Company will designate an E&S Manager who will have overall accountability for environmental and social management, compliance and implementation of related Project Company policies.

The roles & responsibilities of the Project Company E&S Manager are outlined below

E&S MANAGER

- Manage the implementation of the project's ESMS to ensure EPC and O&M Company meet ACWA Power and lenders requirements/obligations.
- Ensure the EPC and O&M Company E&S Policy aligns with ACWA Power's corporate level policy and captures lenders requirement in relation to environmental & social issues related to the project
- Monitor the implementation of all environmental & social monitoring requirements during the construction and operational phase through inspections and audits.
- Review and approve the ESMS documents prepared by the EPC Contractor and O&M Company and ensure that these are in accordance with the necessary content requirements as per the ESIA, ESAP and other E&S obligations.
- Coordinate with the EPC Contractor and O&M Company to ensure that audits and inspections are being undertaken accordingly and inform the corporate level E&S Manager of any non-compliances.
- Have oversight of the EPC Contractor and O&M Company in the process for E&S incident reporting, investigation and follow-up.
- Notify and update the corporate level E&S Manager in regard to particular issues (e.g. long-standing non-conformances, E&S incidents and sensitive grievances).
- Review and approve corrective action plans with respect to issued non-conformances prepared by the EPC Contractor or O&M Company.
- Implementation of the RAP in line with the requirements within the Project specific RAP. The implementation of the RAP will be in coordination with the following Project personnel (as provided in the RAP):
 - Project Company Deputy CEO;

- Business Development Team (Uzbekistan);
- RAP Implementation Team (which will include qualified resettlement/social experts);
- Financial Dept.; and
- Human Resource Manager.

Note: Refer to the Project specific RAP (Chapter 9) on the Roles and Responsibilities of the Project personnel above and other stakeholders involved in the implementation of the RAP.

The Project Company will ensure that the EPC Contractor and O&M Company allocate sufficient resources in the recruitment of competent personnel and in addressing HSE related issues.

9.1.3 EPC Contractor / O&M Company (Responsible Party)

It is expected that the Project Company will contractually delineate responsibility for environmental & social management and compliance to the EPC Contractor/O&M Company for the respective project phases.

It is therefore expected that the EPC Contractor and O&M Company will specify certain roles and responsibilities for ESMS implementation to Project staff, as recommended below.

9.1.3.1 Management Team

In order to effectively implement the Project ESMS, management will need to:

- Experienced, trained & qualified in EHS;
- Fully support and active oversight in the implementation of the PC E&S Policy and the internally developed ESMS;
- Ensure that the PC E&S Policy is included/referenced as part of sub-contractor agreements;
- Promote a positive environmental & social culture and good practices by personal example and leadership;
- Ensure compliance with safeguard conditions for commencing works in areas with involuntary resettlement issues/impacts and ensure timely implementation of corrective actions in case of non-compliance and grievances;
- Review and approve EPC Contractor / O&M Company environmental and social management budgets, resourcing and staffing;
- Ensure resources (human and financial) are allocated appropriately in practice to manage the ESMS;
- Conduct regular site tours that include a specific focus on E&S elements;
- Promote discussion of E&S management at team meetings; and

- Monitor and report on environmental management and performance.

9.1.3.2 Responsible for Environmental & Social Management

The EPC Contractor and O&M Company will need to delegate responsibility for implementation of the ESMS and wider environmental and social management and compliance to a full-time member(s) of staff at the Project site.

The staff may be the HSE Manager or the Environmental and Safety Manager, a member of the HSSE Team or a specific Environmental & Safety Officer. Regardless of the 'title' of this role, this person will be the primary project contact beneath the Project Company to implement the ESMS and will report to management, who will further report to the Project Company.

A guide for the applicable Environmental & Social responsibilities of this role are listed below:

HSE / E&S MANAGER (OR COMMENSURATE POSITION)

- Ensure that the E&S management plans and policies provided herein and within the ESAP are prepared and implemented in accordance with the lenders' requirements.
- Fully support the implementation of the PC E&S Policy;
- Prepare, implement and manage the EPC Contractor / O&M Company project specific ESMS;
- Engage with the PC HSE Manager regularly in regard to E&S management;
- Oversee and ensure execution of the environmental and social management programmes by other project parties (such as sub-contractors and key suppliers);
- Review EPC Contractor/ O&M Company personnel, qualifications, competency and environmental performance;
- Monitor the Project to ensure environmental and social compliance (including for sub-contractors and supplier - as per the scope of the ESMS);
- Advise management on matters pertaining to the environmental and/or social elements;
- Investigate environmental and social issues, incidents and non-conformances, implement corrective actions and report those to the management/relevant authorities;
- Maintain applicable environmental and social records as required by the ESMS (e.g. incident registers, NCR reports, corrective action reports, grievance register etc.);
- Ensure monitoring programmes are implemented by qualified personnel and report the results to the Project management for review and as a basis for continuous improvement;

- Display and monitor site bulletin boards to ensure they remain 'live' and 'up-to-date' with relevant environmental & social information;
- Coordinate, plan, formulate and/or deliver environmental and social induction training to all project personnel (including subcontractors) as well as regular toolbox talk environmental training sessions;
- Organise programmes and activities to promote environmentally responsible conduct in the prevention of injury, ill health and environmental impact throughout the workforce;
- Stop any unsafe activity which is not compliant with environmental legislation or lender requirements, and correct such work practice and/or conditions before allowing work to resume/commence;
- Act as point of contact for any sub-contractor with regard to environmental issues;
- Ensure that each sub-contractor is aware, compliant and implementing the requirements of the ESMPs;
- Review subcontractor's personnel, qualifications, competency and environmental performance; and
- Undertake regular internal ESMS audits to assess compliance and implement corrective & preventative actions – audits are to include all sub-contractors at the project.

HSE ENGINEER OR E&S ENGINEER

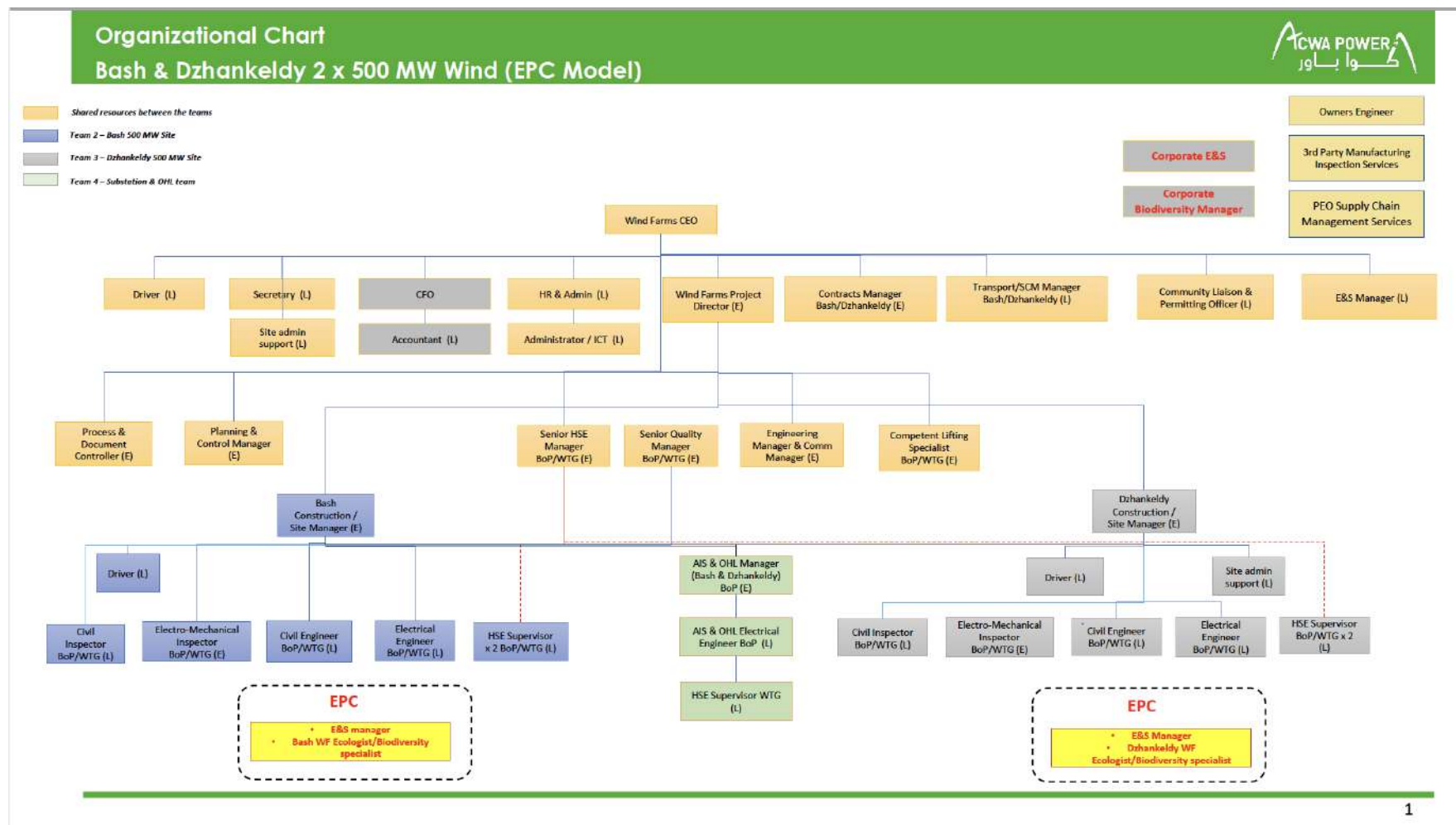
- Fully support the implementation of the PC E&S Policy;
- Implement and assist management of the EPC Contractor / O&M Company project specific ESMS;
- Work with and engage with the EPC/O&M HSE/E&S Manager regularly in regard to E&S management;
- Actively ensure that environmental and social management programmes by other project parties are being undertaken as per project requirements (such as sub-contractors and key suppliers);
- Monitor the Project to ensure environmental and social compliance (including for sub-contractors and supplier - as per the scope of the ESMS);
- Advise HSE/E&S Manager on matters pertaining to the environmental and/or social elements;
- Actively investigate environmental and social issues, incidents and non-conformances, implement corrective actions;
- Maintain applicable environmental and social records as required by the ESMS (e.g. incident registers, NCR reports, corrective action reports, grievance register etc.);
- Ensure monitoring programmes are undertaken and reported;

- Prepare and monitor site bulletin boards to ensure they remain 'live' and 'up-to-date' with relevant environmental & social information;
- Alongside the HSE/E&S Manager , coordinate, plan, formulate and/or deliver environmental and social induction training to all project personnel (including sub-contractors) as well as regular toolbox talk environmental training sessions;
- Undertake programmes and activities to promote environmentally responsible conduct in the prevention of injury, ill health and environmental impact throughout the workforce;
- Stop any unsafe activity which is not compliant with environmental legislation or lender requirements, and correct such work practice and/or conditions before allowing work to resume/commence;
- Alongside the HSE/E&S Manager , act as point of contact for any sub-contractor with regard to environmental issues;
- Monitor on a daily basis that sub-contractor is aware, compliant and implementing the requirements of the ESMPs;
- Alongside the HSE/E&S Manager , review subcontractor's personnel, qualifications, competency and environmental performance; and
- Alongside the HSE/E&S Manager , undertake regular internal ESMS audits to assess compliance and implement corrective & preventative actions – audits are to include all sub-contractors at the project.

Note: Further to the above, a full-time Ecologist must be employed during the construction phase of the Project with the sole responsibility of managing biodiversity-related management and monitoring plans. During active seasons of Russian Tortoise and Southern Even-fingered Gecko, whenever ground-breaking works will take place, a full-time herpetologist must be on site to assist with fauna identification, capture and relocation.

The figure below shows the organizational chart for the Project Company and the EPC Contractor.

Figure 9-1 Organizational Chart



9.2 Environmental & Social Awareness and Training

E&S implementation will not be effective unless the project workforce are aware of their specific responsibilities with regard to environmental protection and social safeguarding. It is therefore necessary for the EPC Contractor/O&M Company to ensure that the workforce are trained appropriately according to the relevant elements of the project ESMS.

Tailored training requirements relevant to elements of works will need to be developed and defined as part of the ESMS (e.g. personnel associated with waste management should require training on relevant components of the waste management plan).

9.2.1 Type of Training Sessions

The EPC Contractor/O&M Company (and as applicable the Sub-contractors) will deliver applicable elements of E&S training within:

- Induction Training
 - To the entire workforce, to include key environmental and social components linked to the E&S Policy and developed ESMS; that are applicable to all employees.
- Tool-Box Talks
 - Environmental & Social tool-box talk training sessions on regular basis to remind workers of E&S considerations when undertaking normal day-to-day activities; and
- Specific training sessions on ESMS and E&S Management Plans
 - To ensure staff are competent to implement the ESMS, or undertake activities that may have inherent E&S risks or potential impacts to receptors. All staff with specific responsibilities and with authority to implement mitigation measures and monitoring/audit commitments should be trained in regard to such plans/procedures.

9.2.2 Planning of Training

In order to record identified training needs, the EPC Contractor/O&M company will develop and maintain a project environmental training matrix (falling under wider HSSE training) to identify the training type and frequency required for each staff role.

A training plan/programme will also be prepared to set out the frequency of training requirements.

All training material will be prepared in advance and documented. It will be prepared in English language and applicable local languages or those languages that apply to the engaged workforce. Where necessary translators may be required for specific sessions.

9.2.3 Content of Training Sessions

INDUCTION TRAINING

During project inductions, all project workforce and visitors will receive an element of Environmental and Social induction classroom training, which as a minimum will include an overview of:

- PC E&S Policy;
- Labour management
- Contact details for the EPC Contractor/O&M Company E&S Manager and E&S Engineer;
- Main topics of E&S risk/impact (which will include critical habitat/sensitive species, archaeological buffer zones, waste, hazardous materials, receptors or communities and vulnerable groups including herders under Dzhankeldy LLC & nearby villages);
- Environmental incident response and internal reporting requirements including who shall be contacted in the instance of an incident;
- Duty of care, highlighting that all staff have a responsibility to carry out their duties in accordance with the PC E&S Policy and related ESMS and to report any and all environmental incidents.

The induction shall make it clear that interference with any wildlife or archaeological remains shall be strictly prohibited. The training session will also highlight the importance of maintaining environmental & social awareness; the seriousness of environmental & social requirements and that compliance is a condition of employment.

TOOLBOX TALK ENVIRONMENTAL & SOCIAL TRAINING SESSIONS

This will be varied depending on the risks, impacts, opportunities and compliance related to specific activities by construction/operational teams, but may include the following (provided as examples):

- Air quality emissions and control measures for vehicles, plant and equipment drivers/operators;
- Dust control and dust mitigation techniques for heavy vehicles' drivers and dust generating equipment operators;
- Erosion and sediment control for operators of earth moving equipment;
- Hazardous materials handling including handling, transportation and storage of hazardous materials as well as maintenance and refuelling of vehicles and machinery;
- Spill prevention and response for personnel involved in the storage of fuel and other hazardous materials;

- Ecologically significant fauna and mitigation measures for all construction personnel. This includes the actions to be implemented in case of trapped or injured fauna etc.
- Noise control and mitigation measures for vehicles, plant and equipment drivers/operators;
- Traffic control and mitigation techniques for vehicle drivers (e.g. cars, buses, heavy goods vehicles, etc.);
- Waste management and chemicals and hazardous materials management, including transportation and disposal for all construction personnel;
- Emergency management and incident response for all construction personnel;
- Grievance procedure including methods to submit a complaint, review and response period; and
- Gender Based Violence & Harassment (GBVH) including Sexual Exploitation & Abuse (SEA) reporting system and company/legal sanctions for such behaviour.

SPECIFIC TRAINING SESSIONS ON ESMS AND E&S MANAGEMENT PLANS

Training sessions on the ESMS or specific activities or plans/procedures will need to be tailored and delivered to staff based on their specific content and key considerations. As a minimum, training will be provided for the following management plans/procedures due to the specific risks associated with these aspects:

- All ecological plans & procedures. This is due to the ecological sensitivity of the Project site;
- Archaeological Chance Find Procedure;
- Cultural/Archaeological Management Plan;
- SEA & SH Prevention & Response Action Plan; and
- Gender Based Violence & Harassment Policy.

9.2.4 Training Records

Further to the training being undertaken the environmental training records will identify as a minimum:

- Description and purpose of training;
- Date and location;
- Trainer and attendees (with attendance signatures);
- Photos or other documents as attachments to evidence the training.

A consolidated record of training undertaken by all workers will be maintained and will be comparable against the training matrix.

10 AUDIT PROGRAMME

Auditing is an integral requirement of any management system and should be considered as a continual process to ensure the successful implementation of the ESMS.

10.1 Internal Audits

The ESMS will establish, implement and maintain an internal audit programme that identifies the frequency, methods, responsibilities, planning requirements and reporting of audits and inspections.

When establishing an audit and inspection programme, the organisation should consider the potential frequency and significance of environmental and social risks relative to the construction and operational phase and adjust the audit scope and frequency accordingly.

When developing and undertaking audits the following will need to be established:

- Define scope, audit criteria and the objectives of each audit;
- Select audit staff competent in the audit process and subject matter; and
- Ensure that audit results are reported to relevant senior management.

The audits will be undertaken on a quarterly basis during the construction/commissioning phase and annually during the operational phase.

10.2 ACWA Power Corporate Audits

It is expected that the ACWA Power corporate HSSE team will audit the Project's management system on an annual basis as a minimum.

10.3 Lenders Monitoring and Reporting

Monitoring requirements will be established with the lenders and monitoring reports will be provided and reported to the lenders. These reports are likely to be based upon site visits to evaluate the implementation of both the ESAP (a covenant to the loan), and the suitability & effective of the established ESMS in practice. The frequency for these will be stated in the ESAP.

In addition, a RAP implementation Compliance Report will be prepared prior to the commencement of works in areas impacted by involuntary resettlement (economic & physical displacement) for the Wind Farm and along the OHTL. Additional monitoring will be continued throughout the Project construction phase as per the requirements within the Project specific RAP

11 NON-CONFORMITY AND CORRECTIVE ACTION

All non-conformances identified during audits, inspections and monitoring activities will be recorded and followed up as non-conformity. Clear processes for actions are stated in the Project Company ESMS Implementation Manual and will be followed.

Non-conformances are instances where Project compliance obligations (such as a legal requirement, or ESMS requirement) are not being fulfilled, or cannot be evidenced. Examples of non-conformity include, but are not limited to:

- Breach of an environmental standard;
- Commencement of works without an approved risk assessment and method statement that covers environmental issues identified herein;
- No review of risk assessment and method statements following any significant changes in requirements that could adversely impact the environment;
- Appointment of a waste transport/disposal service provider that is not appropriately licensed;
- Failure to comply with waste storage/disposal requirements as identified by risk assessment and/or method statement;
- Failure to comply with chemical storage and/or handling requirements;
- Un-containable or uncontrollable spills of fuels or chemicals;
- Undertaken works outside the scope defined within the risk assessment and method statement; and,
- Discharge of untreated, contaminated waste water to the environment;
- Commencement of site clearance and construction works within the involuntary resettlement areas; and,
- Grievances received in relation to physical and economic impacts (impacts within the RAP or unanticipated impacts).

Each non-conformance and near miss will be recorded utilising a developed reporting process. All non-conformances and near misses shall include the following information:

- Location and description of the non-conformance and the criteria/requirement that has been breached;
- The proposed corrective action including who holds responsibility for undertaking this action;
- The proposed preventative action to ensure against reoccurrence of the non - compliance;
- Any required monitoring and follow up; and

- Key performance indicators and a deadline for the successful completion of the corrective and preventive action.

11.1 Corrective Action

Any situation or condition that is non-conforming or otherwise poses an imminent risk to the environment, or social welfare should be immediately resolved.

It is expected that a corrective action plan will be developed to respond to individual NCRs. The corrective action plan shall include determination of root cause, proposed actions, timelines, required resources and any changes needed to ESMS documentation. The corrective action plan should be approved by a responsible person for managing the ESMS.

Records of implemented corrective actions shall also be maintained.

If a situation or condition cannot be corrected immediately, temporary measures such as necessary for the protection of the environment should be implemented. However, NCRs relating to involuntary resettlement will require that physical works in areas of impact be stopped immediately until the full implementation and reporting of the corrective action plan.

12 EMERGENCY PREPAREDNESS AND RESPONSE

The likelihood of an E&S incident can be minimised by effective risk management planning and development of applicable response plans as part of an ESMS.

All risk assessments and method statements will need to include consideration of the potential for environmental incidents. Suitable incident response equipment, should be maintained at appropriate locations on site and Project staff be suitably trained to use such equipment and respond to such emergencies.

The Project will prepare and implement an Emergency Preparedness and Response Plan to include requirements for co-ordination with the applicable external agencies (i.e. emergency services), impacted stakeholders and statutory authorities in the instance that a pollution incident occurs.

The plan will identify procedures for reasonably foreseeable emergency situations. As per the ACWA Power Project Company ESMS Implementation Manual, this is required to include drills at the Project site and any relevant training to specifically involved personnel.

When establishing the Emergency Preparedness and Response Plan, the following should be considered:

- The most appropriate method for responding to an emergency situation;
- Internal and external communication process;
- The action required to prevent or mitigate environmental impacts;
- Mitigation and response actions to be taken for different types of emergency situations;
- The need for post-emergency evaluation to determine and implement corrective and preventative actions;
- Periodic testing of planned emergency response actions;
- Training of emergency response;
- A list of key personnel and aid agencies, including contact details (such as fire department, spillage clean-up services);
- Evacuations routes and assembly points; and
- The possibility of the need for mutual assistance from neighbouring organisations/projects.

12.1 Incidents

Incident investigation and analysis will need to be undertaken in co-ordination with the provision of Element 10 established in the ACWA Power HSSE Management System Framework. In summary, this requires clear processes for incident reporting, response, investigation, analysis, follow up and documentation.

13 STAKEHOLDER ENGAGEMENT

The project has developed a SEP, which will be implemented during both construction, commissioning and operations. This will also need to be updated and made applicable prior to the operational phase. The SEP includes a suitable grievance mechanism to allow local community complaints to be raised in a clear process.

Note: All processes relating to Stakeholder Engagement should refer to the Project Specific Stakeholder Engagement Plan (SEP).

Stakeholder engagement can be described as a systematic effort to understand and involve stakeholders and their concerns in the Project activities and decision-making processes. Stakeholders are defined as any group or individual who can affect, or can be affected by, the Project.

The main objectives for stakeholder engagement are:

- To inform the relevant stakeholders about the Project;
- To capture views and concerns of the relevant stakeholders with regard to the project;
- To enhance ownership of the project within the host community;
- To provide a basis for stakeholder participation in impact identification and mitigation.

For Projects that have environmental and social impacts, consultation is not a single conversation but a series of opportunities to create understanding about the Project among those that are likely to be affected or might have an interest in it, and to learn how these stakeholders view the project and its related risks, impacts, opportunities, and mitigation measures. Listening to stakeholder concerns and feedback can be a valuable source of information to help identify environmental and social risks (real and perceived) and improve project management.

13.1 Grievance Mechanism

13.1.1 Worker Grievances

The SEP includes a grievance procedure for workers to raise workplace concerns. The procedure includes an appropriate level of management and address concerns promptly, using an understandable and transparent process that provides timely feedback to those concerned, without any retribution. The mechanism allows for anonymous complaints to be raised and addressed.

The grievance mechanism must not impede access to other judicial or administrative remedies that might be available under the law or through existing arbitration procedures, or substitute for grievance mechanisms provided through collective agreements.

All staff will need to be informed of the grievance procedure during their induction to the project and the procedure will be made readily available and easily accessible.

13.1.2 Third-Party Grievances

The SEP also includes a procedure for third-party grievances that establishes methods to receive and register communications from third-party stakeholders (Project Affected Persons and Interest based stakeholders). This includes:

- A method to screen and assess the issues raised and determine how to address them;
- A method to provide, track, and document responses, if any; and
- A method to adjust the ESMS management program, as appropriate, in response to external grievances.

The grievance procedure shall be reviewed and updated (as applicable) to ensure it remains scaled to the risks and adverse impacts of the project and include consideration of any affected stakeholders.

It must seek to resolve concerns promptly, using an understandable and transparent consultative process that is culturally appropriate and readily accessible, and at no cost and without retribution to the party that originated the issue or concern. The mechanism should not impede access to judicial or administrative remedies.

14 COMMUNICATION

The ESMS will establish, implement and maintain processes needed for internal and external communication relevant to environmental and social performance of the Project.

Lines of communication relevant to the construction phase will be clearly defined within the CESMP whilst lines of communication relevant to the operational phase will be clearly defined within the OESMP.

Associated processes will establish:

- What will be communicated
- When it will be communicated
- With whom to communicate
- How to communicate

When establishing communication processes relevant to the ESMS, particular note will be made to

- Compliance obligations, including any reporting requirements to the statutory environmental authority
- Reporting requirements required by the Project lenders.

15 DATA MANAGEMENT AND RECORD KEEPING

The implementation of the ESMS will generate data, that will be required to be managed. The appropriate management of records is a requirement of any successful ESMS and can be used to track progress, review effectiveness and demonstrate compliance.

The ESMS relevant to both the construction, commissioning and operational phases should include the collation of the records including (but not limited to) the following:

- Environmental and Social induction and training records;
- Relevant records of competence/qualifications;
- Accident Investigation Reports;
- Grievance register;
- Internal Audits reports (including close - out);
- Non-Conformance Reports;
- Incident Reports;
- Environmental & Social Inspection & Audit Reports (including corrective action reports);
- Environmental & Social Monitoring Results;
- Waste Manifest Forms and Chain of Custodies;
- Environmental & Social Risk Assessments and Method statements;
- Equipment & Social Inspections/Certifications;
- Independent Audit Reports for Lenders (including corrective action reports); and
- Emergency events.

Such records will need to be included on the ESMS register and updated as applicable.

16 REVIEW

Project ESMS documentation will be 'living' and will need to be reviewed and updated in relation to changes in project circumstances, activities, environmental sensitivities and future requirements defined by respective regulatory authorities and Project Lenders.

The ESMS should be regularly reviewed according to any changes in construction, commissioning or operational activities, new (applicable) regulation and in response to results from monitoring, audits and inspection.

Reviews should be undertaken at a frequency to ensure adequacy of the ESMS and to ensure that all potentially significant adverse impacts are identified and that associated control measures are appropriate to the Project.